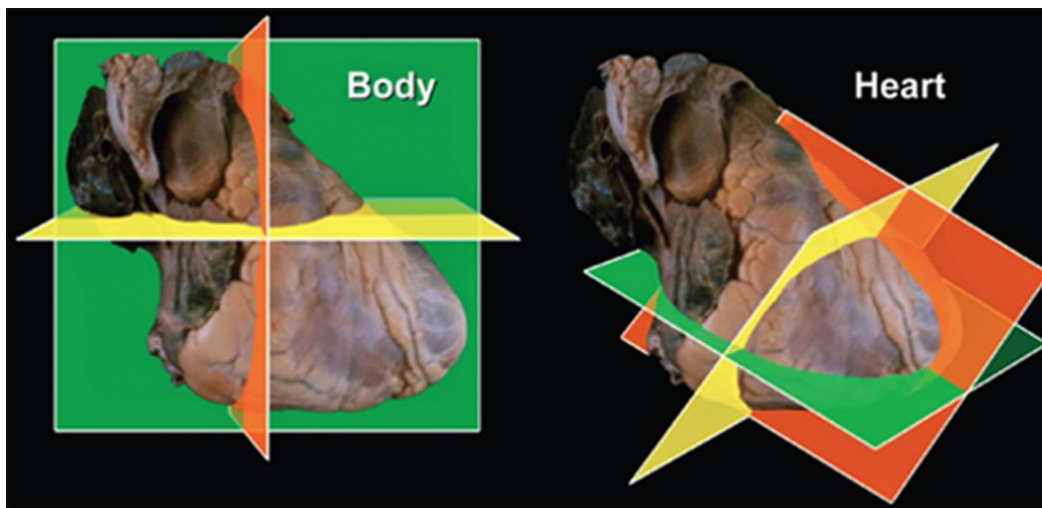
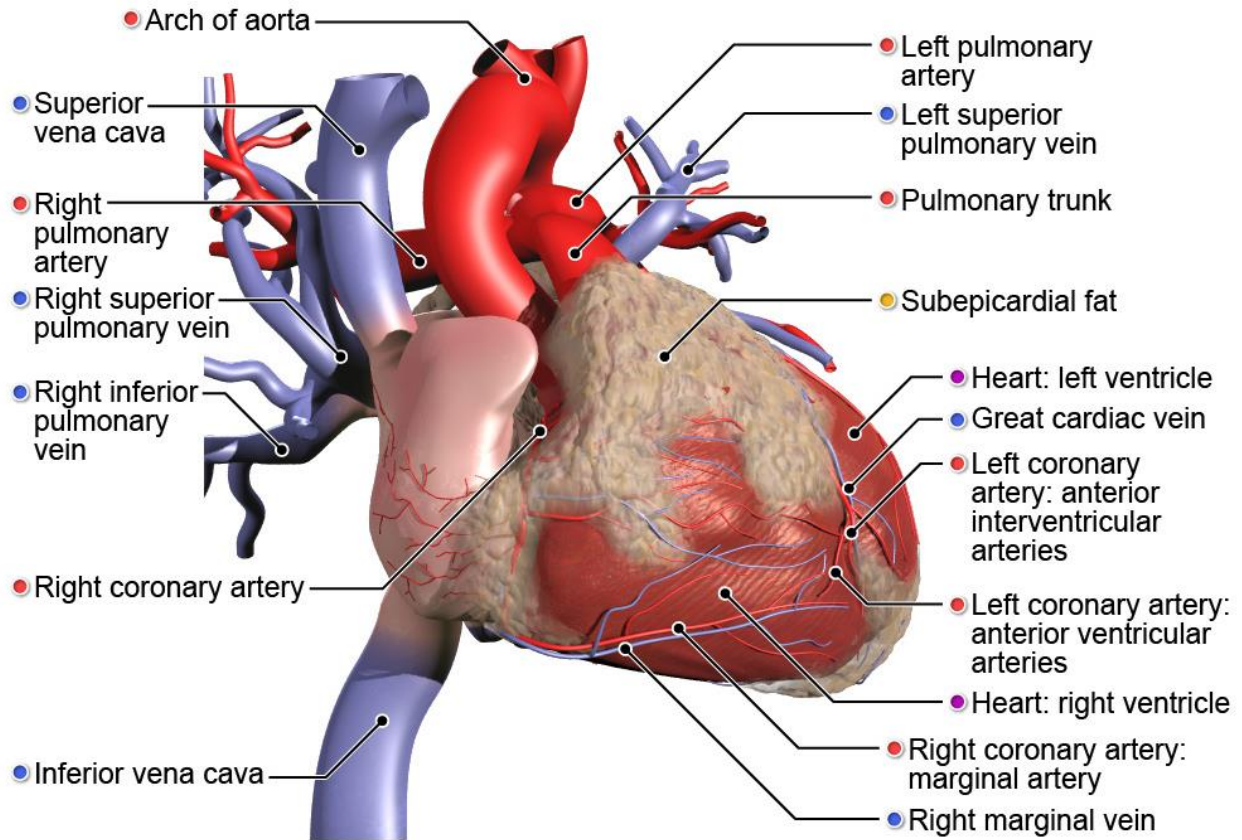


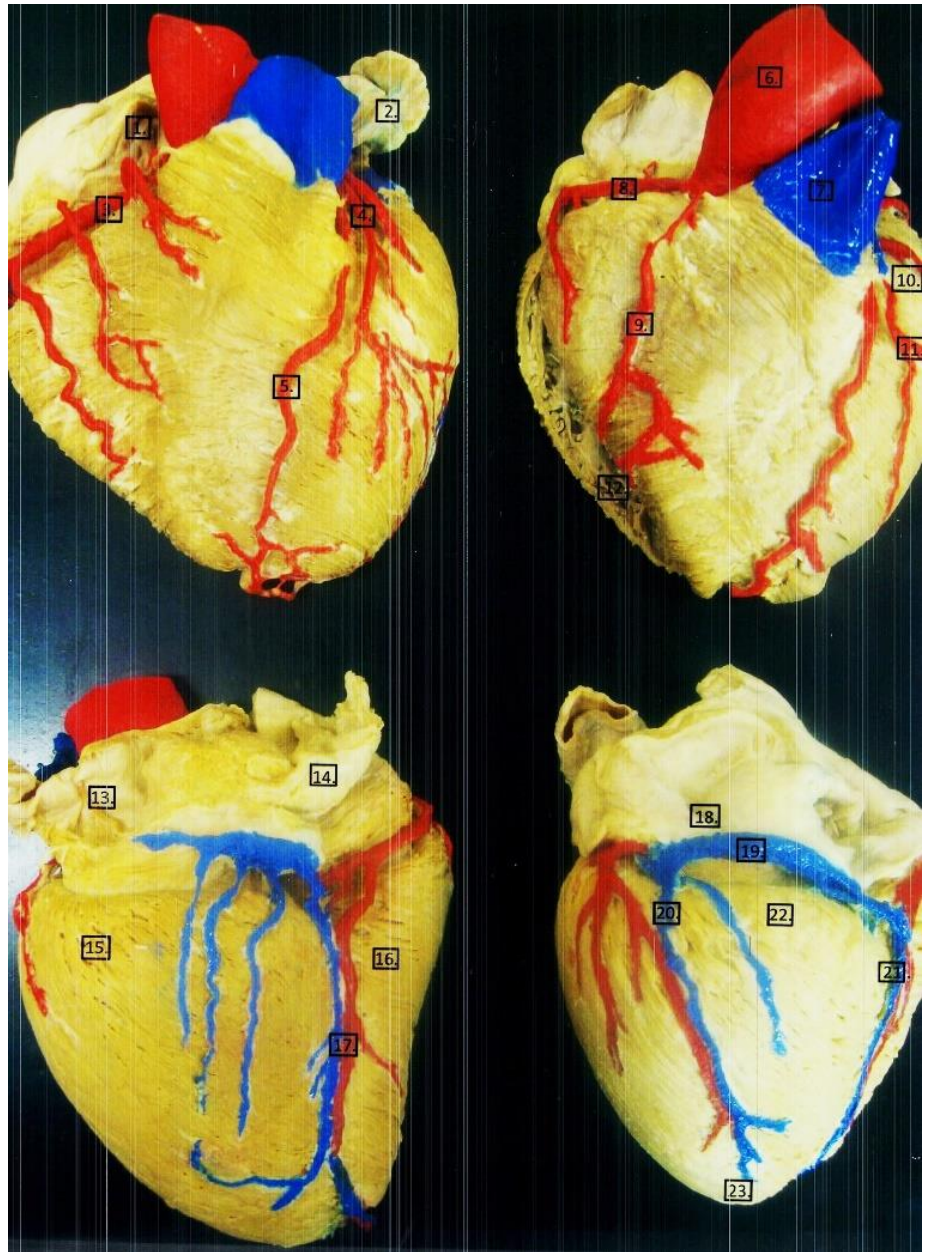
# KARDIOVASKULINĚ SISTEMA





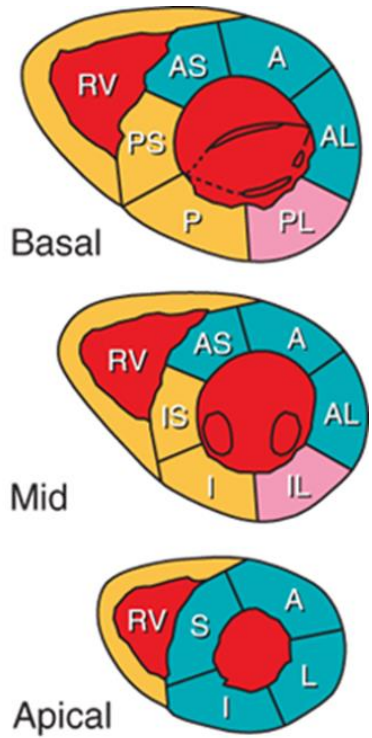
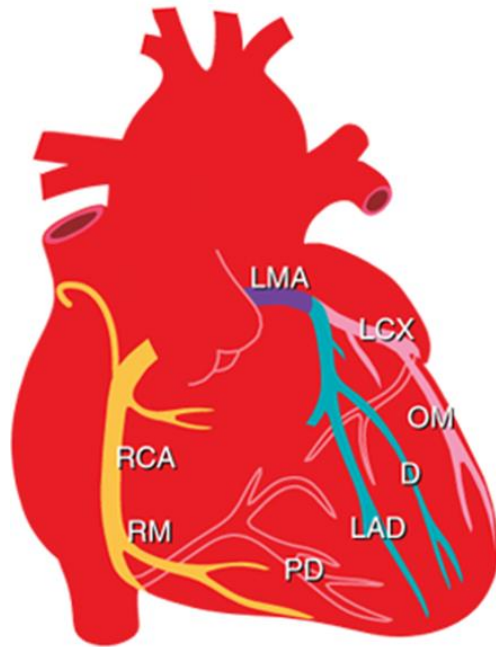
Source: Valentin Fuster, Robert A. Harrington, Jagat Narula, Zubin J. Eapen: Hurst's The Heart, Fourteenth Edition: [www.accessmedicine.com](http://www.accessmedicine.com) Copyright © McGraw-Hill Education. All rights reserved.

1. Auricula dextra
2. Auricula sinister
3. Arteria coronaria dextra
4. Arteria coronaria sinistra
5. Ramus interventricularis anterior; Sulcus interventricularis anterior
6. Pars ascendens aortae
7. Truncus pulmonalis
8. Ramus marginalis dexter
9. Ramus anterior ventriculi dexteri
10. Ramus circumflexus
11. Ramus marginalis sinister
12. Trabeculae carneae
13. Atrium sinistrum
14. Atrium dextrum
15. Ventriculus sinister
16. Ventriculus dexter
17. Ramus interventricularis posterior; Sulcus interventricularis posterior
18. Sulcus coronarius
19. Sinus coronarius
20. Vena posterior ventriculi sinistri
21. Vena cordis media
22. Basis cordis
23. Apex cordis



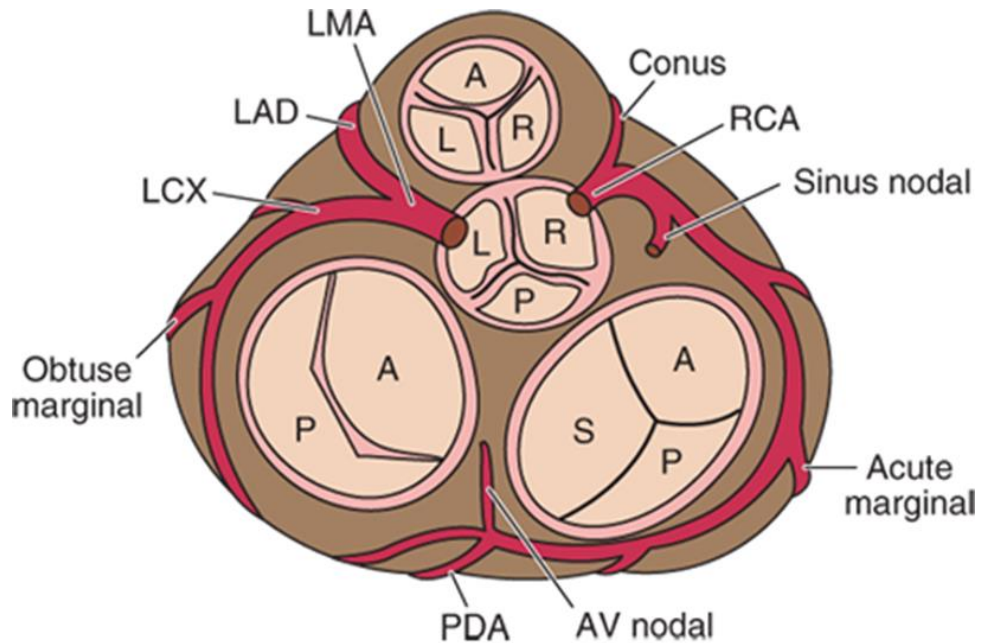
Darbą atliko: LSMU MF 1k, 19gr Severija Pažemeckaitė ir Ieva Sakalauskaitė  
 Redagavo: LSMU MF 5k, 20gr, Anatomijos instituto Prozektore Orinta Klimaitė

LAD, left anterior descending coronary artery;  
 LCX, left circumflex coronary artery;  
 LMA, left main coronary artery;  
 OM, obtuse marginal branch of the circumflex coronary artery;  
 PD, posterior descending coronary artery;  
 RCA, right coronary artery;  
 RM, right marginal branch



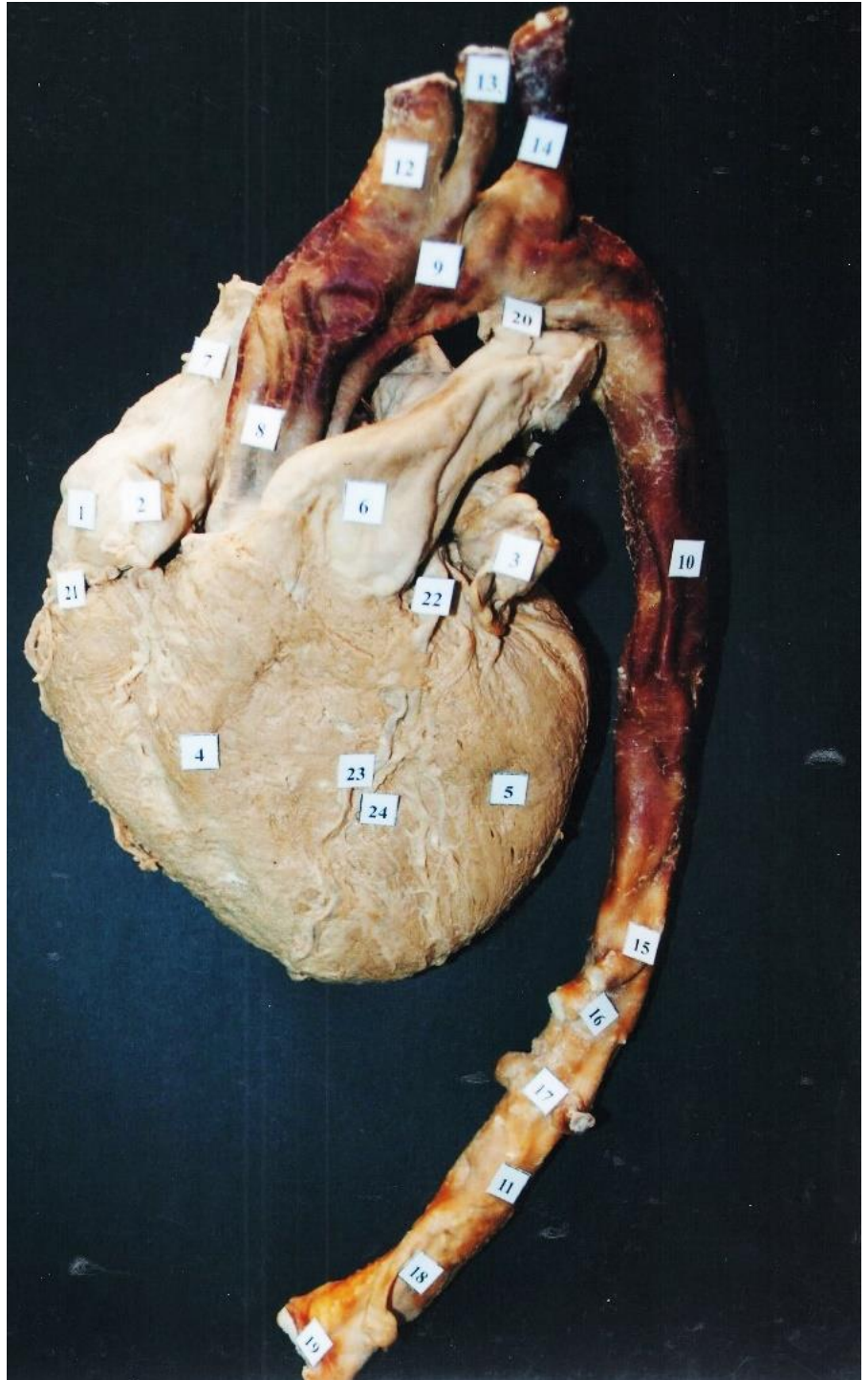
Source: Valentin Fuster, Robert A. Harrington, Jagat Narula, Zubin J. Eapen: Hurst's The Heart, Fourteenth Edition: www.accessmedicine.com Copyright © McGraw-Hill Education. All rights reserved.

Right coronary artery (RCA)  
 Posterior descending artery (PDA)  
 Left main coronary artery (LMA)  
 Left anterior descending (LAD)  
 Left circumflex (LCX) branches.  
 AV, atrioventricular (AV)  
 Left (L)  
 Posterior (P)  
 Right (R)  
 Septal (S)



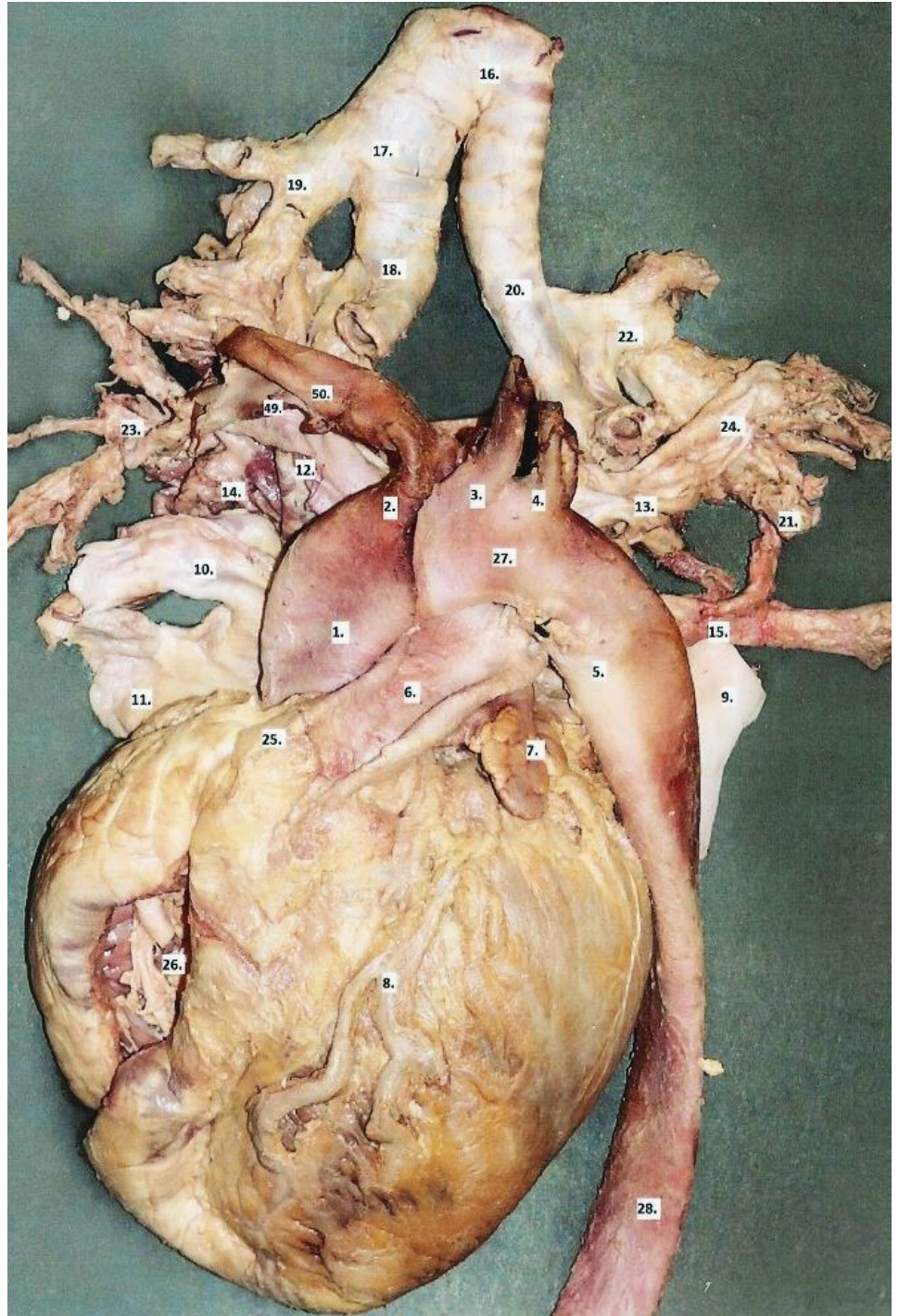
Source: Valentin Fuster, Robert A. Harrington, Jagat Narula, Zubin J. Eapen: Hurst's The Heart, Fourteenth Edition: www.accessmedicine.com Copyright © McGraw-Hill Education. All rights reserved.

1. Atrium dextrum
2. Auricula dextra
3. Atrium sinistrum, auricula sinistra
4. Ventriculus dexter
5. Ventriculus sinister
6. Truncus pulmonalis
7. Vena cava superior
8. Aorta ascendens = pars ascendens aortae
9. Arcus aortae
10. Aorta descendens (pars thoracica aortae)
11. Aorta descendens (pars abdominalis aortae)
12. Truncus brachiocephalicus
13. Arteria carotis communis sinistra
14. Arteria subclavia sinistra
15. Truncus coeliacus
16. Arteria mesenterica superior
17. Arteria renalis dextra et sinistra
18. Arteria mesenterica inferior
19. Arteria iliaca communis dextra et sinistra
20. Ligamentum arteriosum (Botallo)
21. Arteria coronaria dextra
22. Arteria coronaria sinistra
23. Arteria coronaria sinistra, ramus interventricularis arterior
24. Vena interventricularis anterior

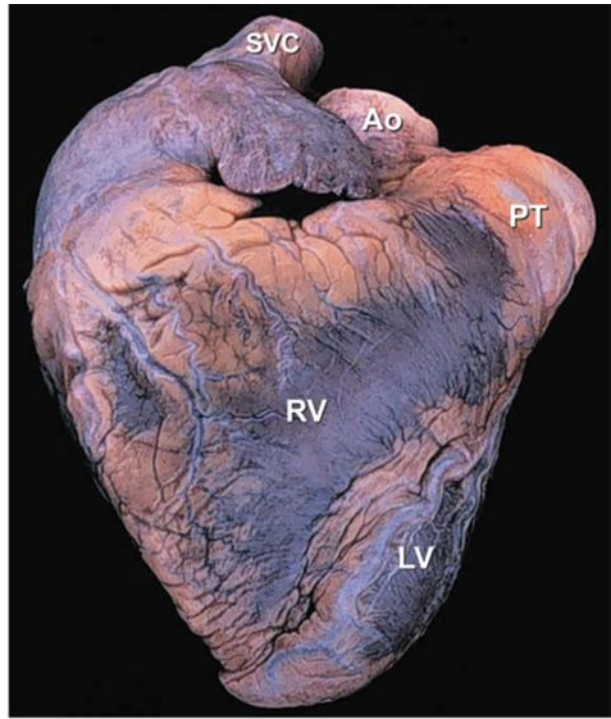
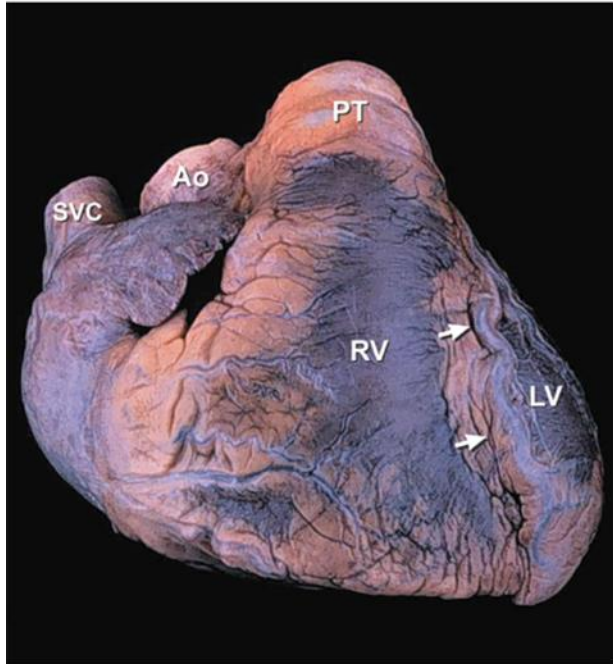


Redagavo: LSMU MF 5k, 20gr, Anatomijos instituto Prozektore Orinta Klimaitė

1. Pars ascendens aortae
2. Truncus brachiocephalicus
3. A. carotis communis sinistra
4. A. subclavia sinistra
5. Lig. arteriosum
6. Truncus pulmonalis
7. Auricula sinistra
8. A. coronaria sinistra, ramus interventricularis anterior
9. Pericardium
10. V. cava superior
11. V. cava inferior
12. A. pulmonalis dextra
13. A. pulmonalis sinistra
14. Vv. Pulmonales dextrae superior at inferior
15. Vv. Pulmonales sinistrae superior et inferior
16. Bifurcatio tracheae
17. Bronchus principalis dexter
18. Bronchus lobaris medius et inferior dexter
19. Bronchus lobaris superior dexter
20. Bronchus principalis sinister
21. Bronchus lobaris inferior sinister
22. Bronchus lobaris superior sinister
23. A. pulmonalis sinistra
24. Aa. Pulmonales dextri superiores at inferiores
25. A. coronaria dextra
26. Ventriculus dexter
27. Arcus aortae
28. Pars descendens aortae
49. A. subclavia dextra
50. A. carotis communis dextra



Darbą atliko: LSMU OF 1k. Darius Vaičius ir Nerijus Zakas, 2011-2012m.m.  
 Redagavo: LSMU MF 5k, 20gr, Anatomijos instituto Prozektorė Orinta Klimaitė



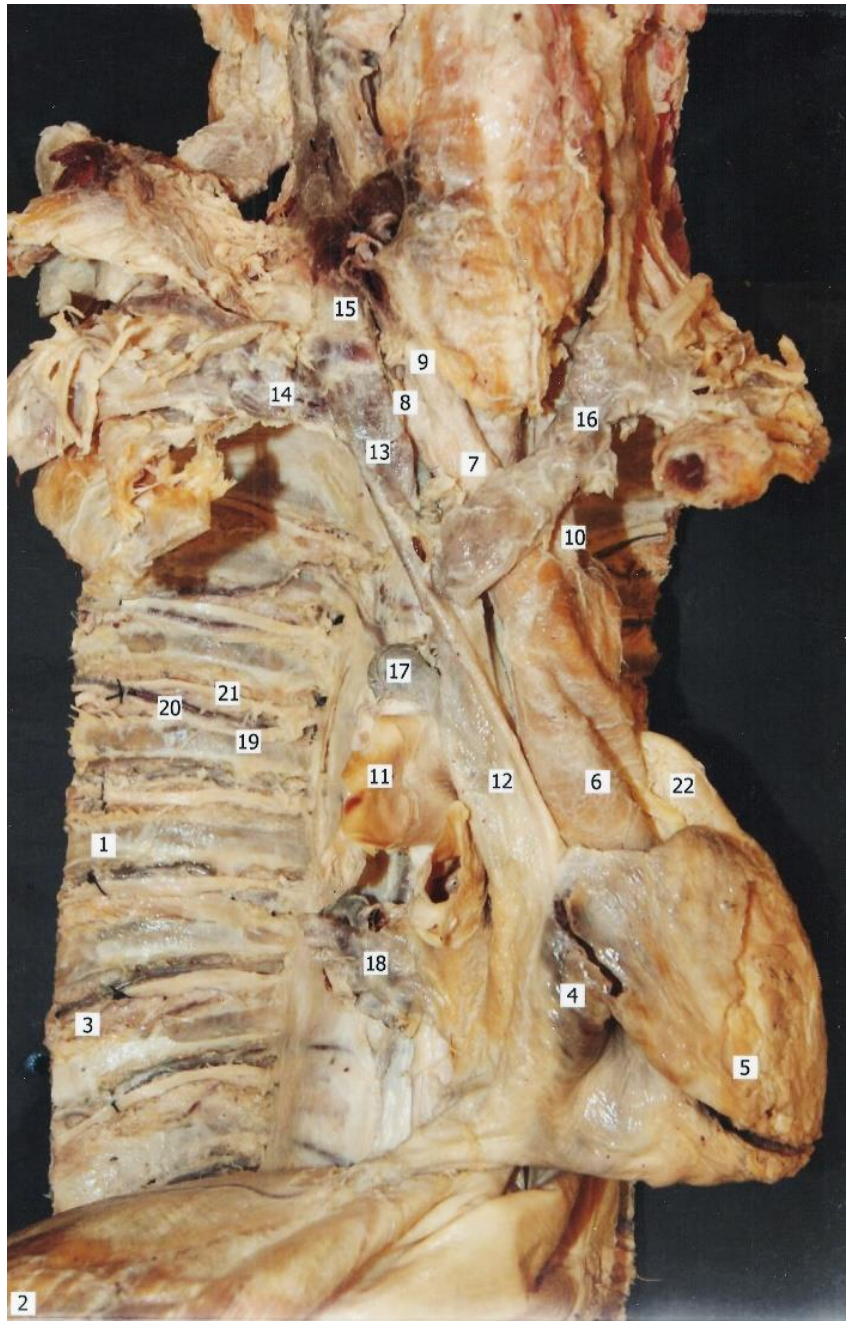
A

Source: Valentin Fuster, Robert A. Harrington, Jagat Narula, Zubin J. Eapen: *Hurst's The Heart*, Fourteenth Edition: [www.accessmedicine.com](http://www.accessmedicine.com) Copyright © McGraw-Hill Education. All rights reserved.

B

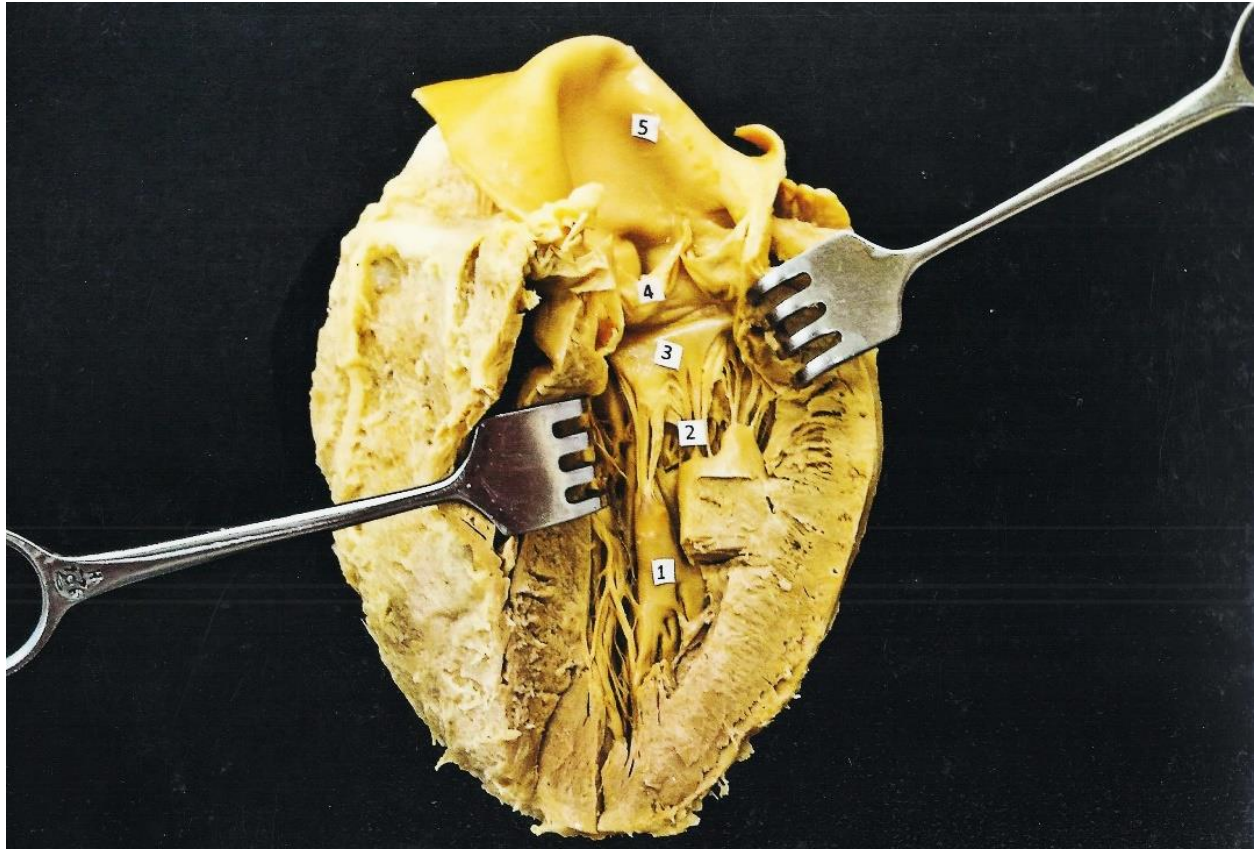
Ao, ascending aorta;  
LV, left ventricle;  
PT, pulmonary trunk;  
RV, right ventricle;  
SVC, superior vena cava.

1. Costa
2. Diaphragma
3. Musculus ontercostalis internus
4. Atrium dextrum
5. Ventriculus dexter
6. Aorta
7. Truncus brachiocephalicus
8. Arteria subclavia dextra
9. Arteria carotica communis dextra
10. Arteria carotica communis sinistra
11. Arteria pulmonalis dextra
12. Vena cava superior
13. Vena brachiocephalica dextra
14. Vena subclavia dextra
15. Vena jugularis interna dextra
16. Vena brachiocephalica dextra
17. Vena azygos
18. Vena pulmonalis dextra
19. Arteria intercostalis posterior
20. Vena intercostalis posterior
21. Nervus intercostalis
22. Truncus pulmonalis



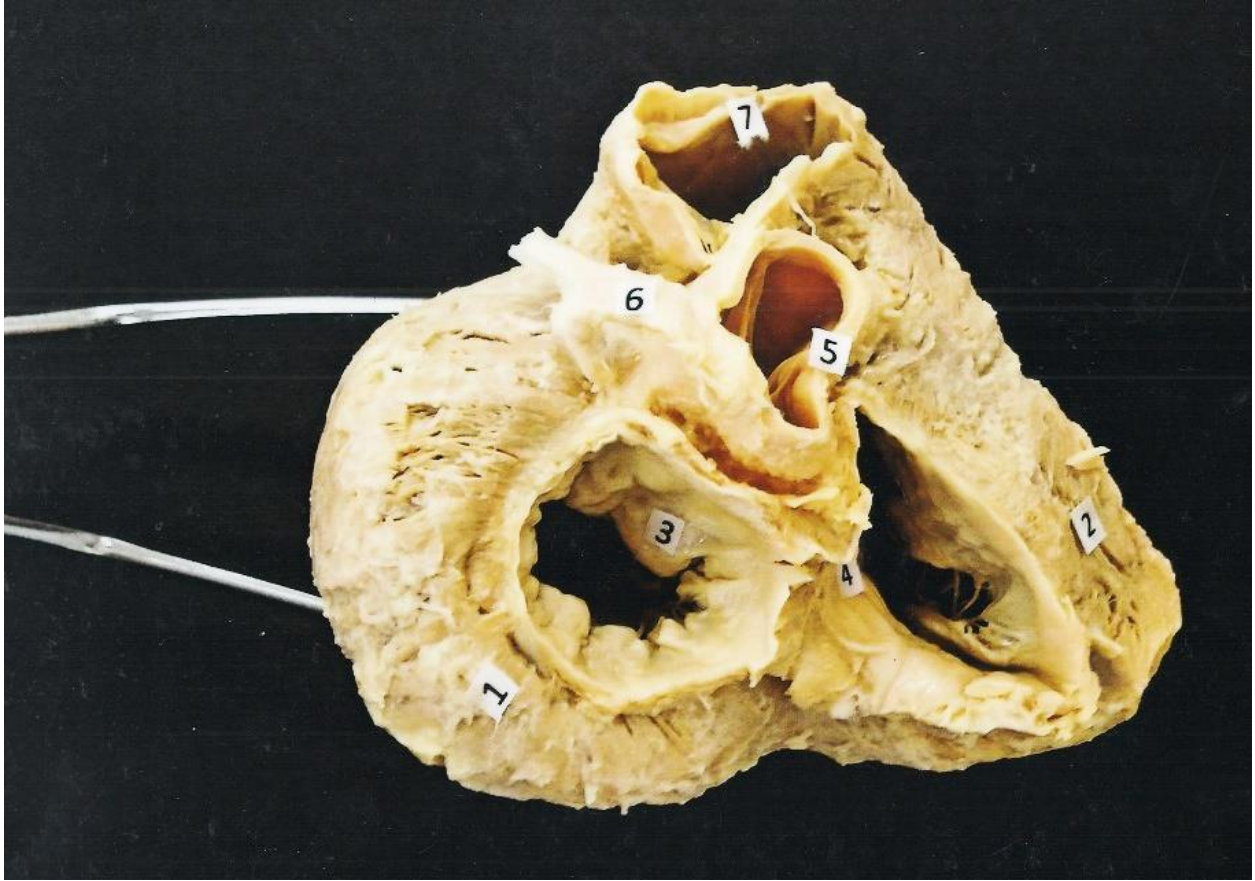


1.

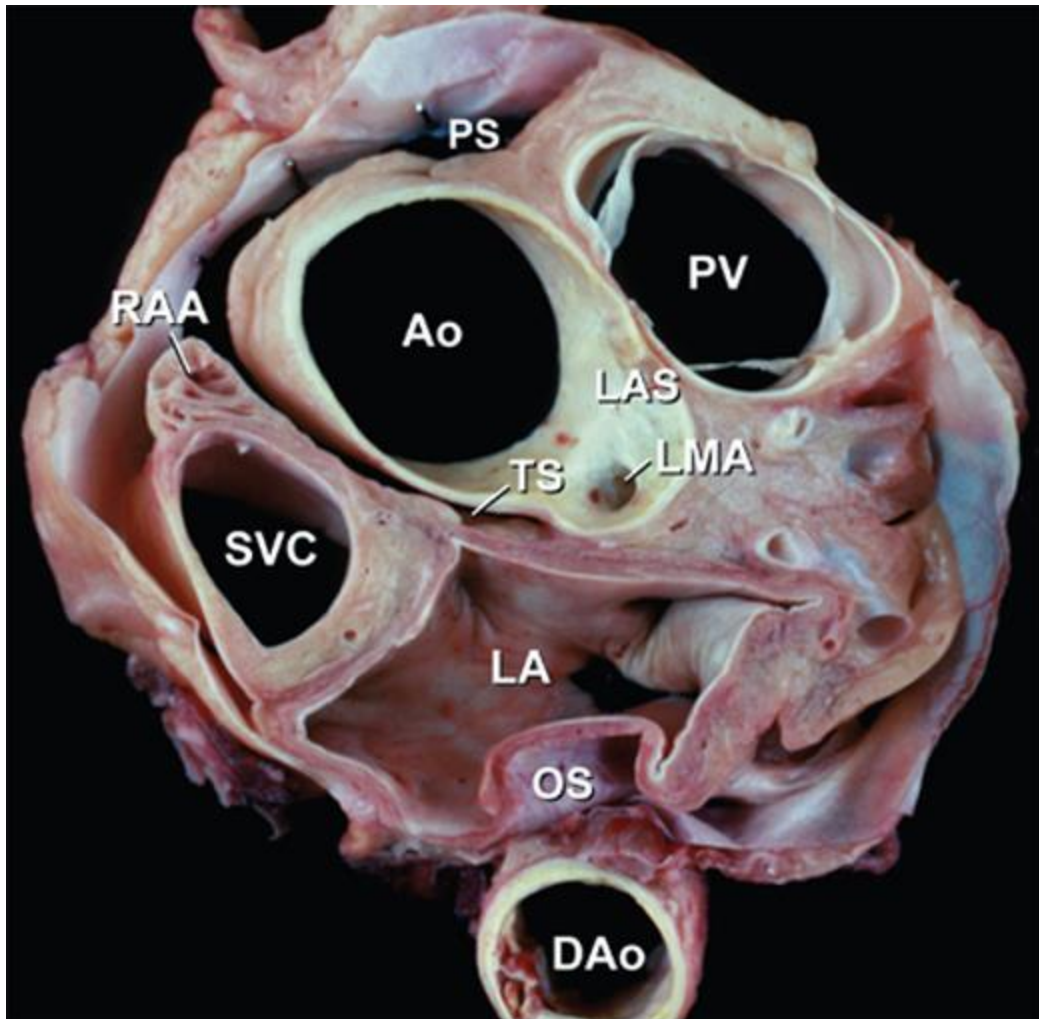


1. Mm. Papillares anterior
2. Chordae tendineae
3. Valva bicuspidalis (Valva mitralis)
4. Valva aortae (Valvula semilunaris)
5. Pars ascendens aortae (Aorta ascendens)

2.



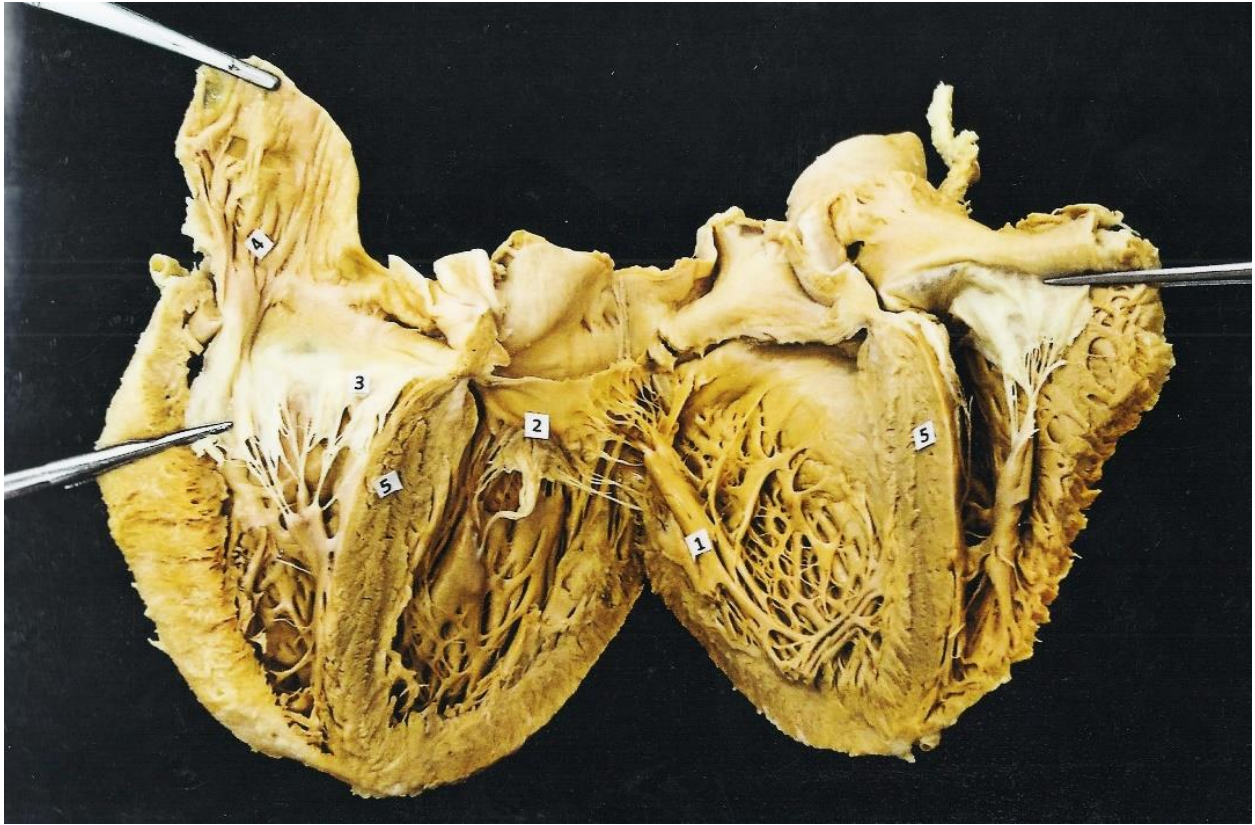
1. Ventriculus dexter
2. Ventriculus sinister
3. Valva bicuspidalis (mitralis)
4. Valva tricuspidalis
5. Valva aortae
6. Arteria coronaria
7. Truncus pulmonalis



Source: Valentin Fuster, Robert A. Harrington, Jagat Narula, Zubin J. Eapen: Hurst's The Heart, Fourteenth Edition: [www.accessmedicine.com](http://www.accessmedicine.com) Copyright © McGraw-Hill Education. All rights reserved.

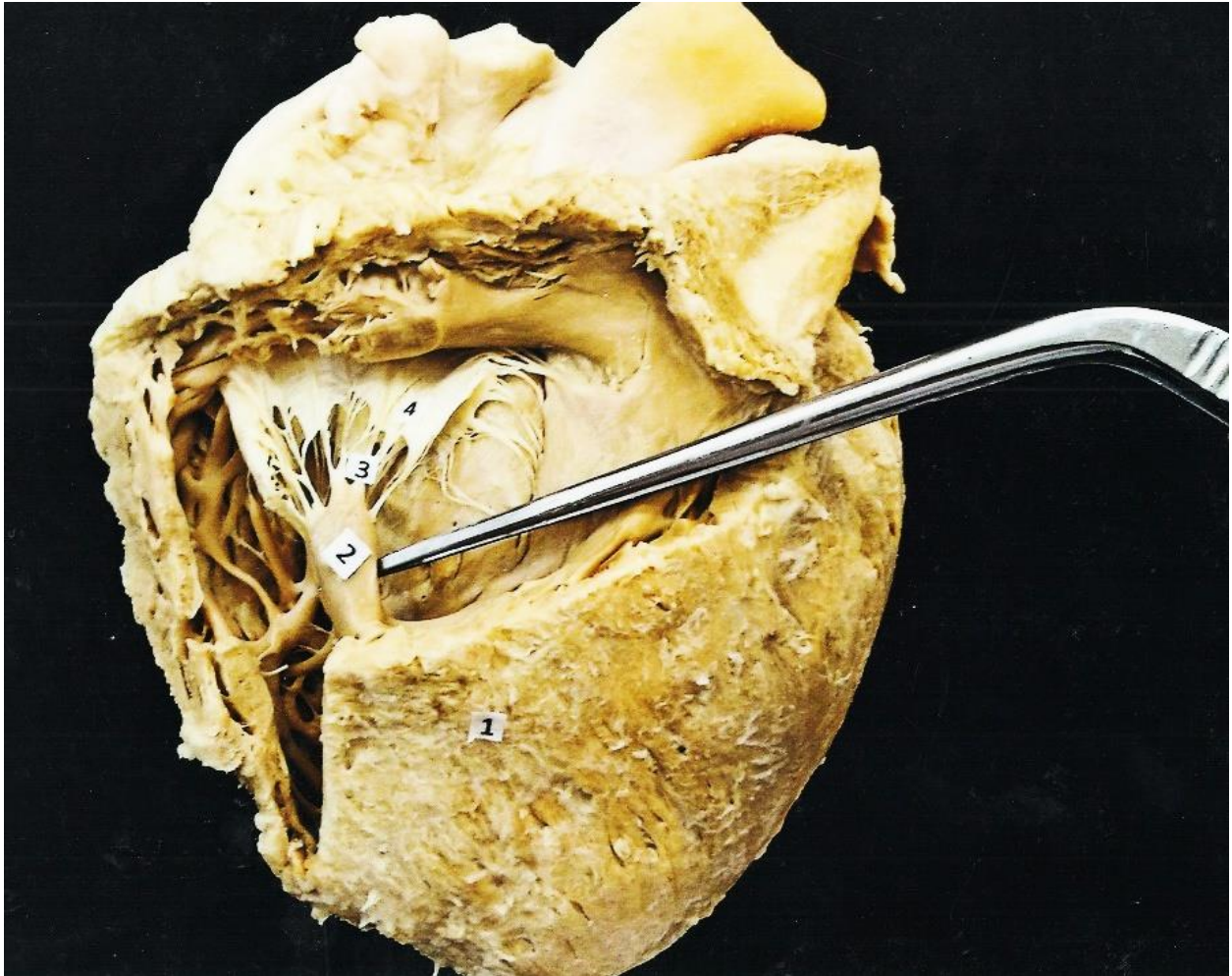
Ao, ascending aorta;  
DAo, descending thoracic aorta;  
LA, left atrium;  
LAS, left aortic sinus;  
LMA, left main coronary artery;  
PS, pericardial sac;  
PV, pulmonary valve;  
RAA, right atrial appendage;  
SVC, superior vena cava

3.



1. Mm. Papillares
2. Valva bicuspidalis (valva mitralis)
3. Valva tricuspidalis
4. Mm. Pectinati
5. Septum interventriculare

4.

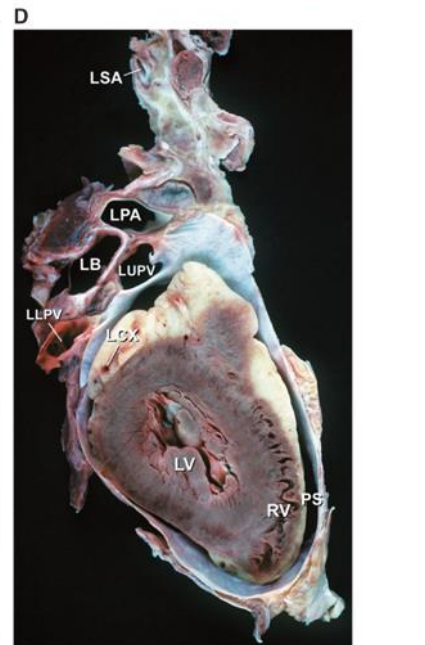
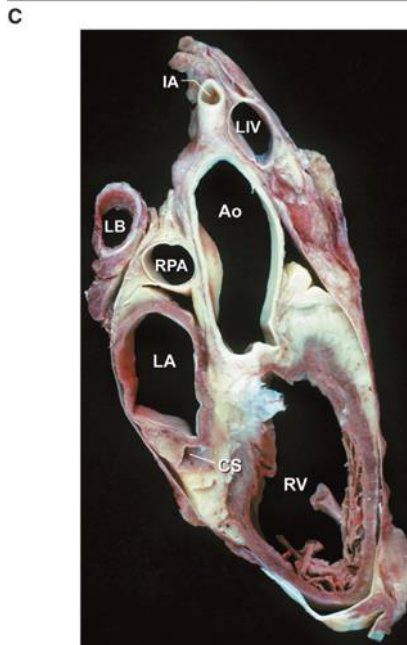
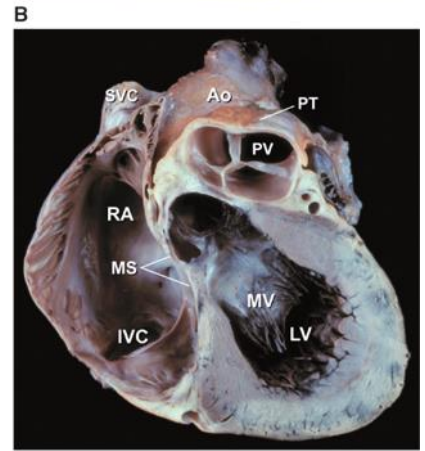
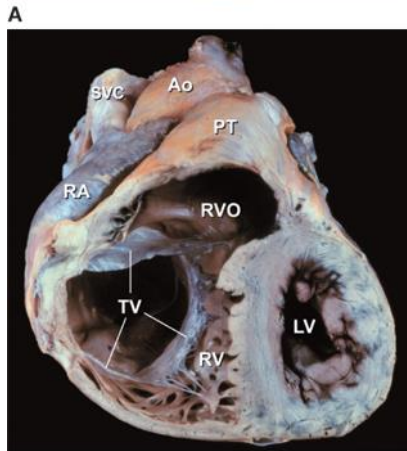
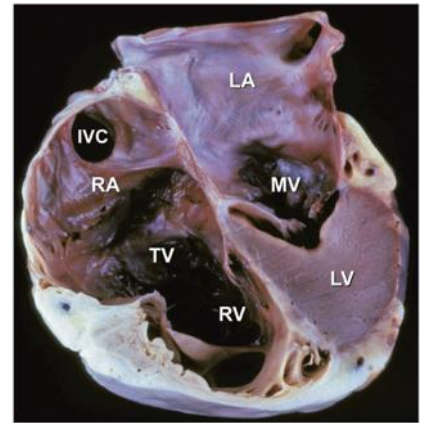
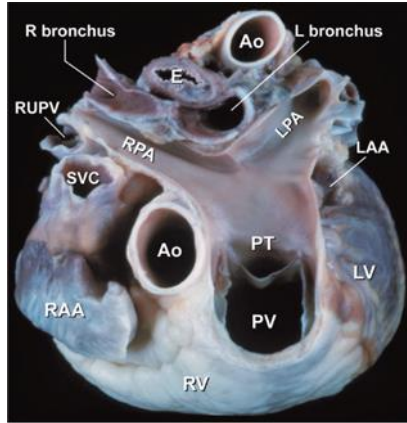


1. Ventriculus dexter
2. Mm. Papillares
3. Chordae tendineae
4. Valva tricuspidalis

Darbą atliko: LSMU MF D. Borisovaitė, R. Ratyte, M. Žitkus

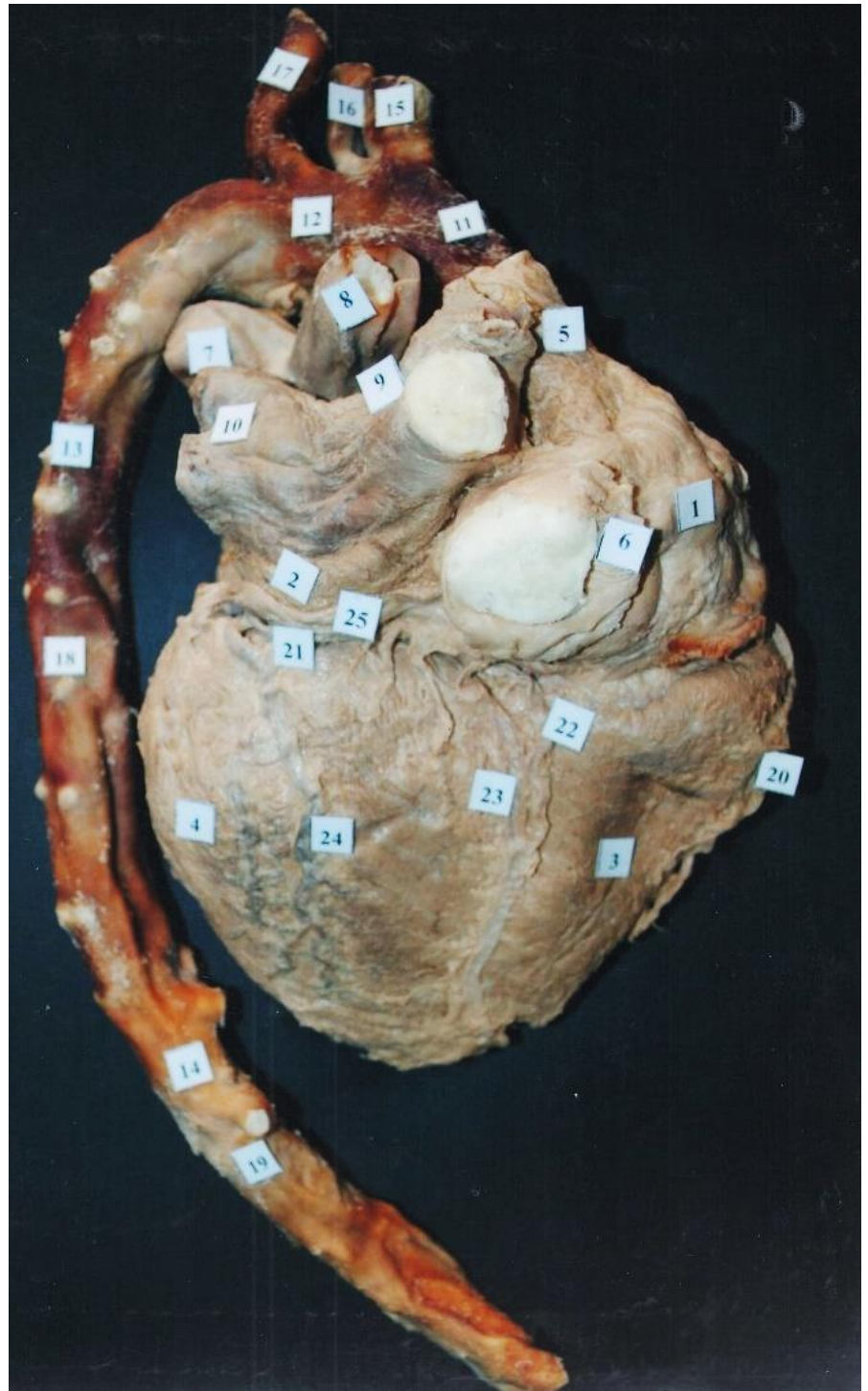
Redagavo: LSMU MF 5k, 20gr, Anatomijos instituto Prozektore Orinta Klimaitė

Ao, ascending aorta;  
 CS, coronary sinus;  
 E, esophagus;  
 IA, innominate artery;  
 IVC, inferior vena cava;  
 LA, left atrium;  
 LAA, left atrial appendage;  
 LB, left bronchus;  
 LCX, left circumflex coronary artery;  
 LIV, left innominate vein;  
 LLPV, left lower pulmonary vein;  
 LPA, left pulmonary artery;  
 LUPV, left upper pulmonary vein;  
 LSA, left subclavian artery;  
 LV, left ventricle;  
 MS, membranous ventricular septum;  
 MV, mitral valve;  
 PS, pericardial sac;  
 PT, pulmonary trunk;  
 PV, pulmonary valve;  
 RA, right atrium;  
 RAA, right atrial appendage;  
 RPA, right pulmonary artery;  
 RUPV, right upper pulmonary vein;  
 RV, right ventricle;  
 RVO, right ventricular outflow;  
 SVC, superior vena cava;  
 TV, tricuspid valve.

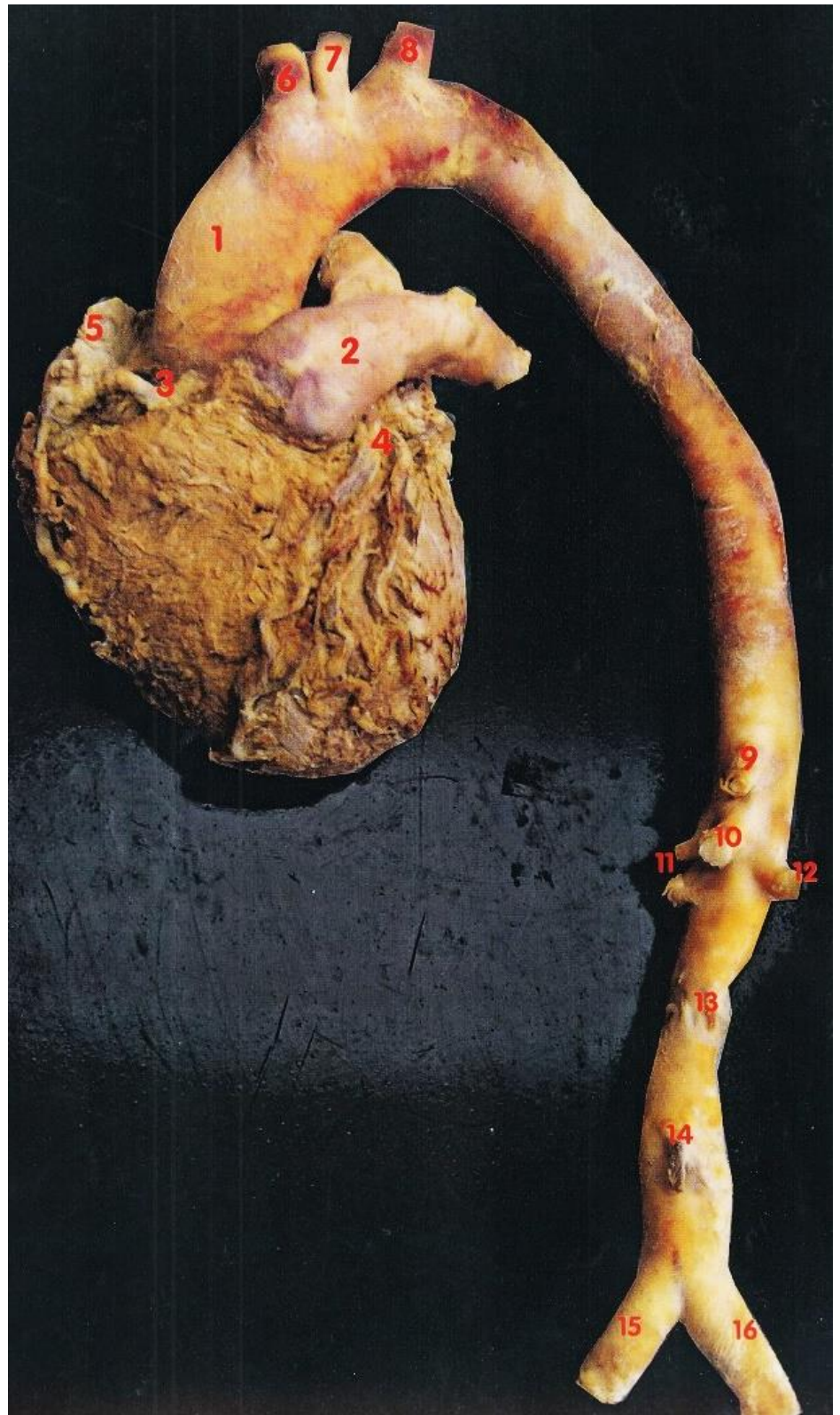


Source: Valentin Fuster, Robert A. Harrington, Jagat Narula, Zubin J. Eapen: Hurst's The Heart, Fourteenth Edition: www.accessmedicine.com Copyright © McGraw-Hill Education. All rights reserved.

1. Atrium dextrum
2. Atrium sinistrum
3. Ventriculus dexter
4. Ventriculus sinister
5. Vena cava superior
6. Vena cava inferior
7. Arteria pulmonalis sinistra
8. Arteria pulmonalis dextra
9. Vv. pulmonales dextrae superior et inferior
10. Vv. pulmonales sinistrae superior et inferior
11. Aorta ascendens = Pars ascendens aortae
12. Arcus aortae
13. Aorta descendens (Pars thoracica aortae)
14. Aorta descendens (Pars abdominalis aortae)
15. Truncus brachiocephalicus
16. Arteria carotis communis sinistra
17. Arteria subclavia sinistra
18. Aa, intercostales posteriores
19. Arteria renalis dextra et sinister
20. Arteria coronaria dextra
21. Arteria coronaria sinistra, ramus circumflexus
22. Ramus interventricularis posterior
23. Vena cardiaca media
24. Vena cardiaca media
25. Ramus posterior ventriculi sinistri
26. Sinus coronarius



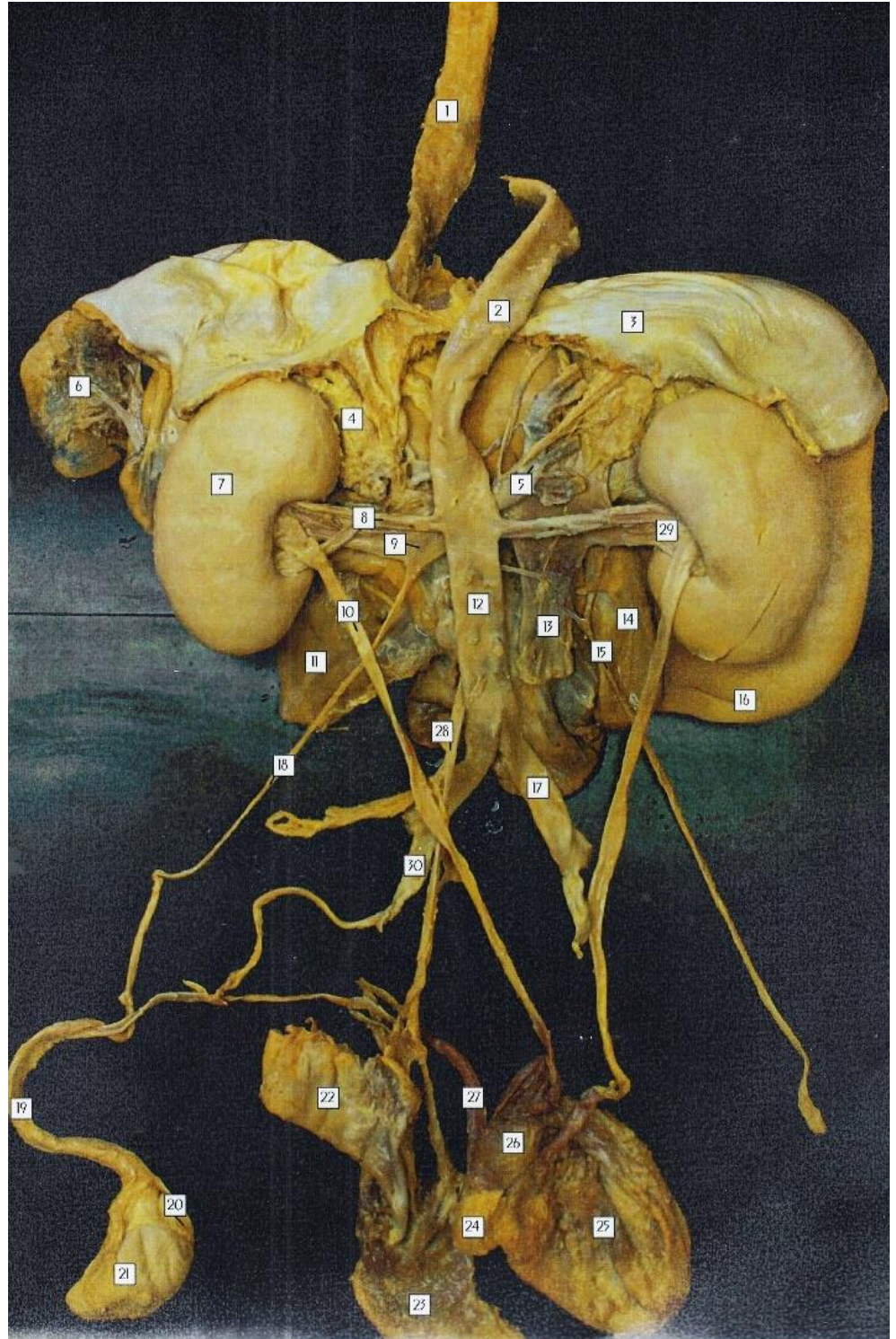
1. Aorta
2. Truncus pulmonalis
3. Arteria coronaria dextra
4. Arteria coronaria sinistra, ramus interventricularis anterior
5. Auricula dextra
6. Truncus brachiocephalicus
7. Arteria carotis communis sinistra
8. Arteria subclavia sinistra
9. Truncus coeliacus
10. Arteria mesenterica superior
11. Arteria renalis dextra
12. Arteria renalis sinistra
13. Arteriae ovarica/testicularis sinistra et dextra
14. Arteria mesenterica inferior
15. Arteria iliaca communis dextra
16. Arteria iliaca communis sinistra



Darbą atliko: LSMU MF 1k, 27gr. Karolina Eva Lesniakaitė ir Andrius Romeika  
 Redagavo: LSMU MF 5k, 20gr, Anatomijos instituto Prozektoriė Orinta Klimaitė



1. Oesophagus
2. Aorta, pars thoracica
3. Diaphragma
4. Glandula suprarenale sinistra
5. Truncus coeliacus
6. Lien
7. Ren sinistra
8. A. renalis
9. V. renalis
10. Ureter
11. Gaster
12. Aorta, pars abdominalis
13. V. cava inferior
14. Vesica biliaris
15. A. v. testicularis dexter
16. Hepar
17. A. iliaca communis
18. V. testicularis sinister
19. Funiculus spermaticus
20. Epidimydium
21. Testis sinister
22. Colon, pars sigmoidea
23. Rectum
24. Glandula prostatica
25. Vesica urinaria
26. Glandula vesiculosa
27. Ductus deferens
28. A. mesenterium inferior
29. Porta renalis
30. A. iliaca interna



Redagavo: LSMU MF 5k, 20gr, Anatomijos instituto Prozektorė Orinta Klimaitė

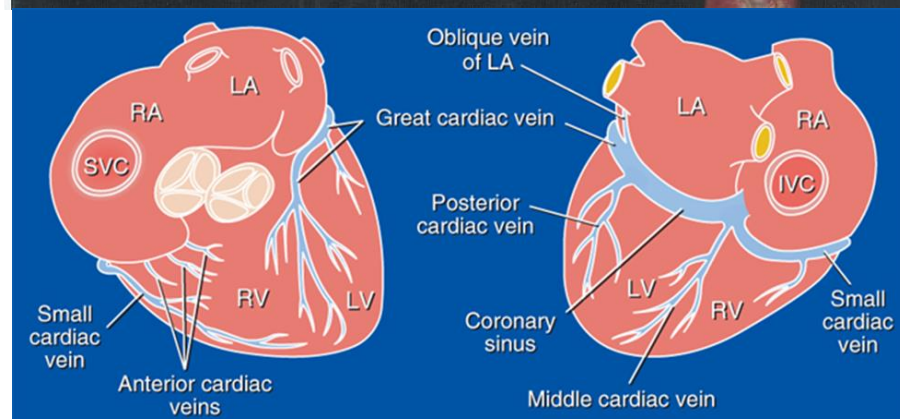
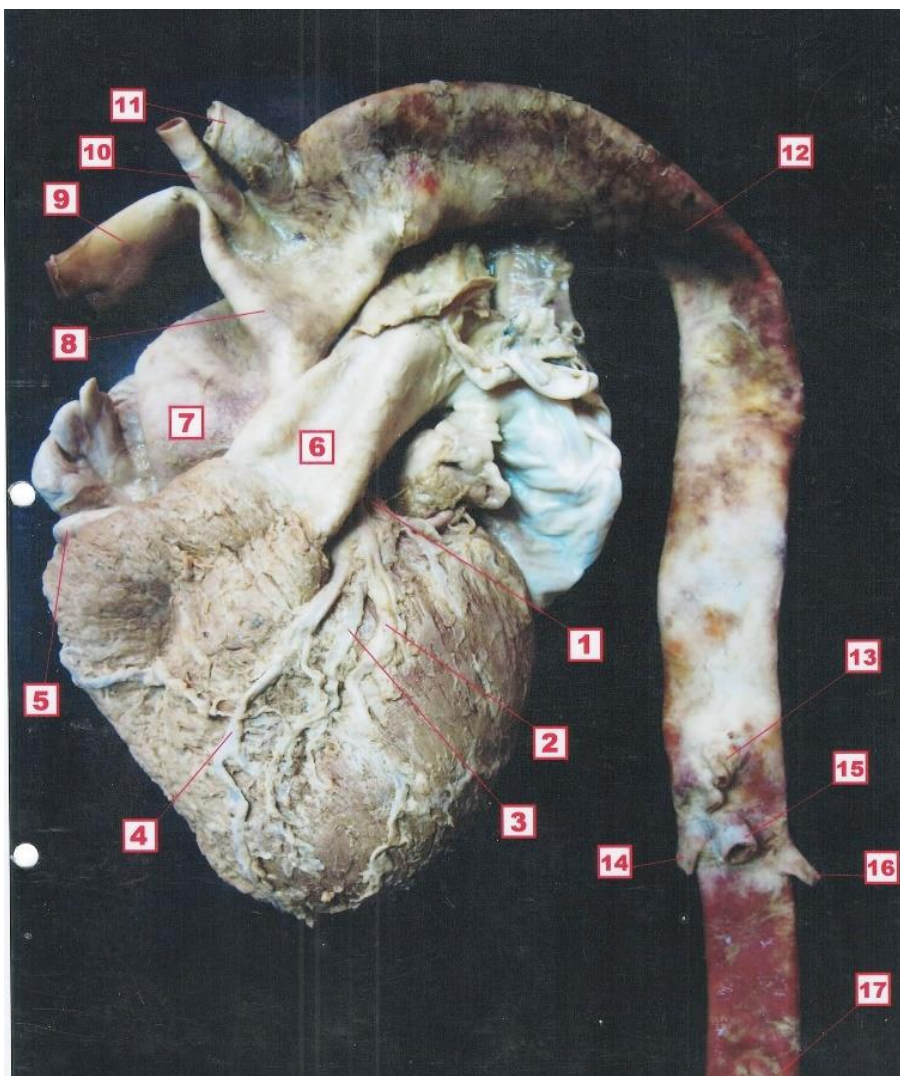
1. Aorta abdominalis
2. Aorta thoracica
3. Truncus coeliacus
4. Arteria mesenterica superior
5. Arteria mesenterica inferior
6. Arteria iliaca communis dextra
7. Arteria iliaca communis sinistra
8. Vena cava inferior
9. Vena renalis
10. Ren
11. Oesophagus
12. Truncus pulmonalis
13. Aorta ascendens
14. Vena cava superior
15. Arteria coronaria dextra
16. Ramus interventricularis anterior arteriae coronariae sinistrae
17. Auricula dextra
18. Pulmo dexter
19. Arteria brachiocephalica
20. Arteria carotis communis sinistra



Darbą atliko: Akvilė Čerkauskaitė MF 1k, 4gr., Justina Saladytė MF 1k 4gr, Justina Pauliukėnaitė MF 1k 5gr.

Redagavo: LSMU MF 5k, 20gr, Anatomijos instituto Prozektorė Orinta Klimaitė

1. arteria coronaria sinistra
2. Vena cordis magna
3. Ramus interventricularis anterior; arteria coronariae sinistrae
4. Vena interventricularis anterior
5. Arteria coronaria dextra
6. Truncus pulmonalis
7. Pars ascendens aortae
8. Arcus aortae
9. Truncus brachiocephalicus
10. Arteria carotis communis sinistra
11. Arteria subclavia sinistra
12. Pars descendens aortae
13. Truncus coeliacus
14. Arteria renalis dextra
15. Arteria mesenterica superior
16. Arteria renalis sinistra
17. Arteria mesenterica inferior

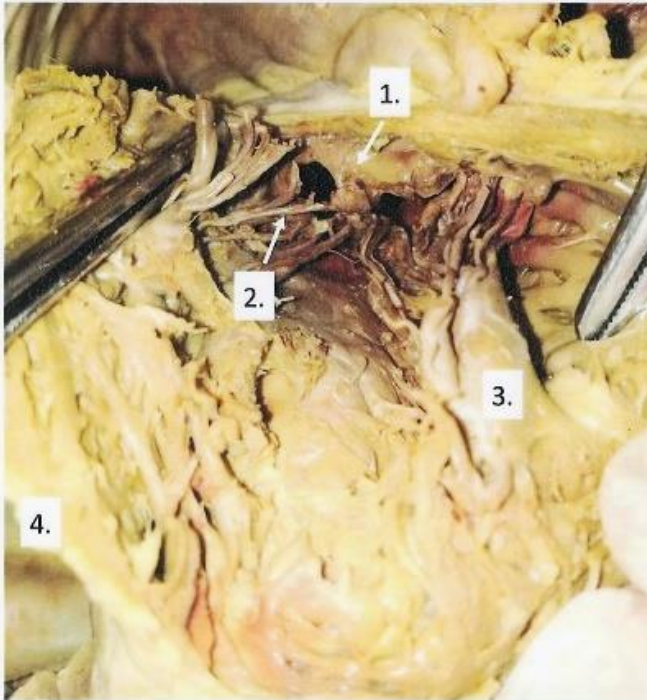


Source: Valentin Fuster, Robert A. Harrington, Jagat Narula, Zubin J. Eapen: Hurst's The Heart, Fourteenth Edition: www.accessmedicine.com Copyright © McGraw-Hill Education. All rights reserved.

Darbą atliko: LSMU 5gr Ugnė Dvarionaitė ir Rokas Gerbutavičius, 2013m.

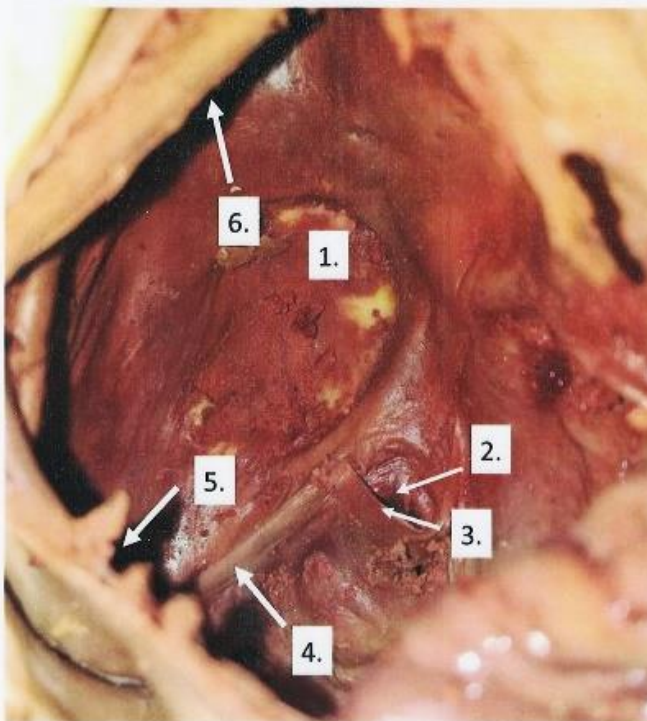
Redagavo: LSMU MF 5k, 20gr, Anatomijos instituto Prozektorė Orinta Klimaitė

### Dešinysis skilvelis (*ventriculus dexter*) (vidinė sandara)



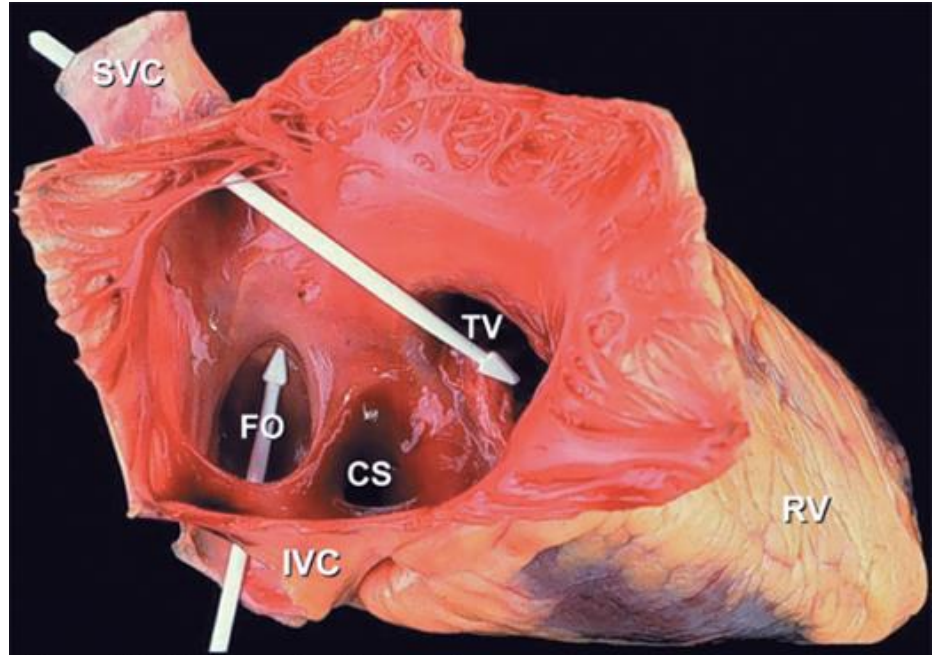
1. **Triburis vožtuvas, burė** (*valva tricuspidalis, cuspis*)
2. **Sausgysliniai siūlai** (*chordae tendineae*)
3. **Speniniai raumenys** (*mm. papillares*)
4. **Miokardas** (*myocardium*)

### Dešinysis prieširdis (*atrium dextrum*) (vidinė sandara)

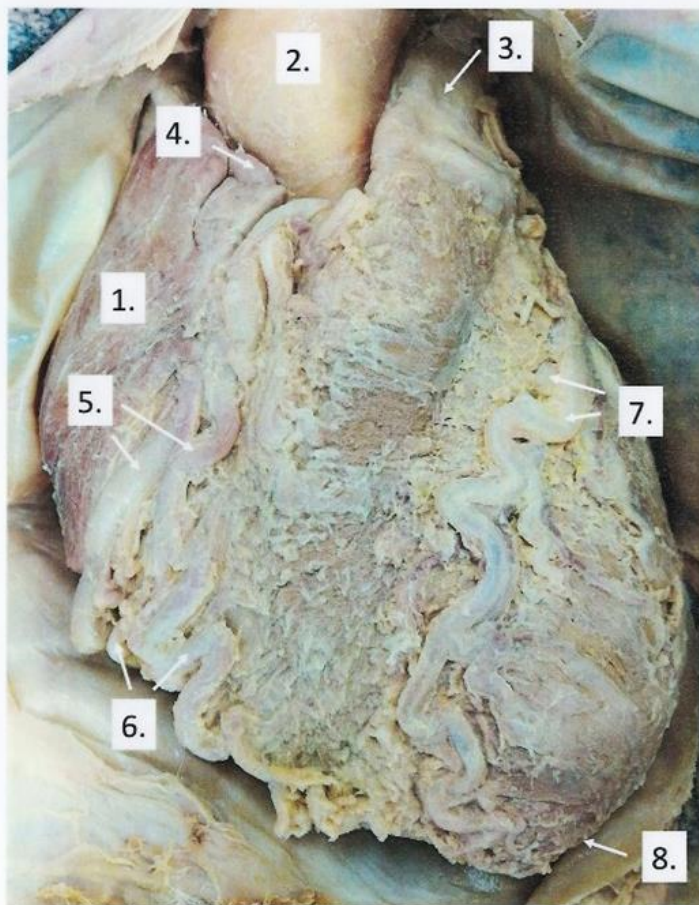


1. **Ovalioji duobė** (*fossa ovalis*)
2. **Vainikinio širdies ančio anga** (*ostium sinus coronarii*)
3. **Vainikinio širdies ančio vožtuvėlis** (*valvula sinus coronarii*)
4. **Apatinės tuščiosios venos vožtuvėlis** (*valvula vanae caeve inferioris*)
5. **Apatinė tuščioji vena** (*vena cava inferior*)
6. **Viršutinė tuščioji vena** (*vena cava superior*)

FO fossa ovalis  
 CS, coronary sinus;  
 IVC, inferior vena cava;  
 RV, right ventricle;  
 SVC, superior vena cava;  
 TV, tricuspid valve



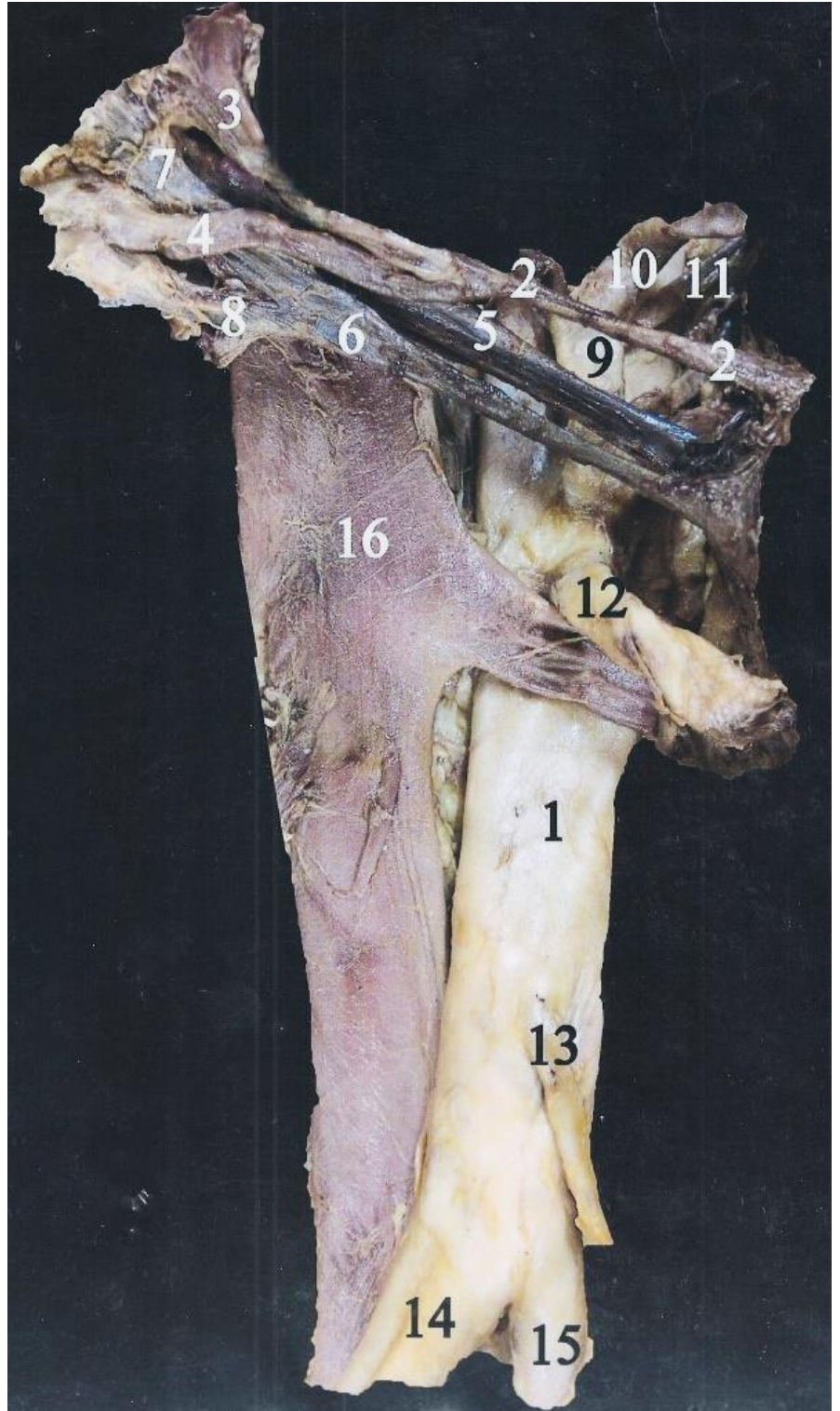
Source: Valentin Fuster, Robert A. Harrington, Jagat Narula, Zubin J. Eapen: *Hurst's The Heart*, Fourteenth Edition: [www.accessmedicine.com](http://www.accessmedicine.com) Copyright © McGraw-Hill Education. All rights reserved.



### Širdis (*cor*) (ventralinis vaizdas)

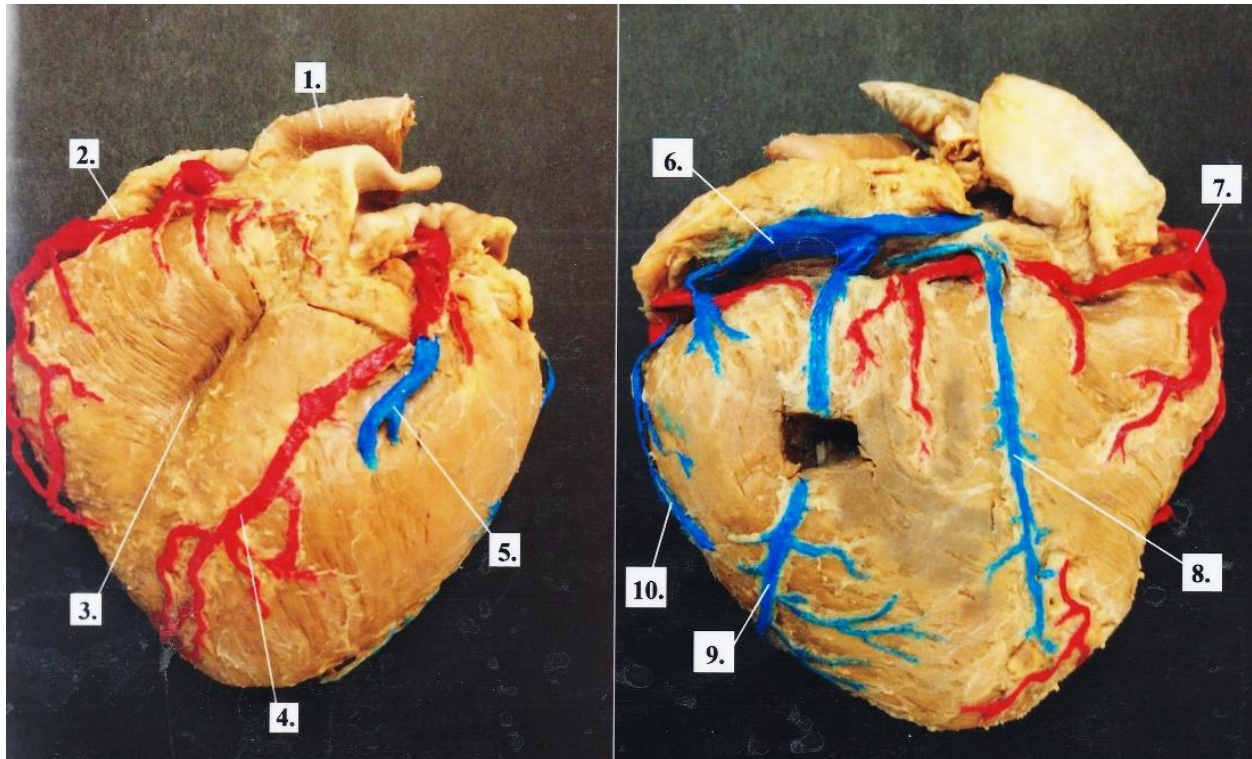
1. Dešinysis prieširdis (*atrium dextrum*)
2. Kylančioji aorta (*aorta ascendens*)
3. Plaučių kamienas (*truncus pulmonis*)
4. Dešinioji ausytė (*auricula dextra*)
5. Dešinioji vainikinė arterija (*a. coronaria dextra*) ir mažoji širdies vena (*v. cardiaca parva*)
6. Dešinioji krašto šaka (*ramus marginalis dexter*) ir dešinioji krašto vena (*v. marginalis dextra*)
7. Priekinė tarpškilvelinė šaka (*r. interventricularis anterior*) ir didžioji širdies vena (*v. cardiaca magna*)
8. Širdies viršūnė (*apex cordis*)

1. Aorta abdominalis
2. Arteria hepatica propria
3. Ramus dexter (Arteria hepatica propria)
4. Ramus sinister (Arteria hepatica propria)
5. Vena portae hepatis
6. Ductus hepaticus communis
7. Ductus hepaticus sinister
8. Ductus hepaticus dexter
9. Truncus coeliacus
10. Arteria gastrica sinistra
11. Arteria lienalis
12. arteria mesenterica superior
13. arteria mesenterica inferior
14. arteria iliaca communis dextra
15. arteria iliaca communis sinistra
16. vena cava inferior



Darbą atliko: LSMU MF 1k, 15gr Agnė Skvarnavičiūtė

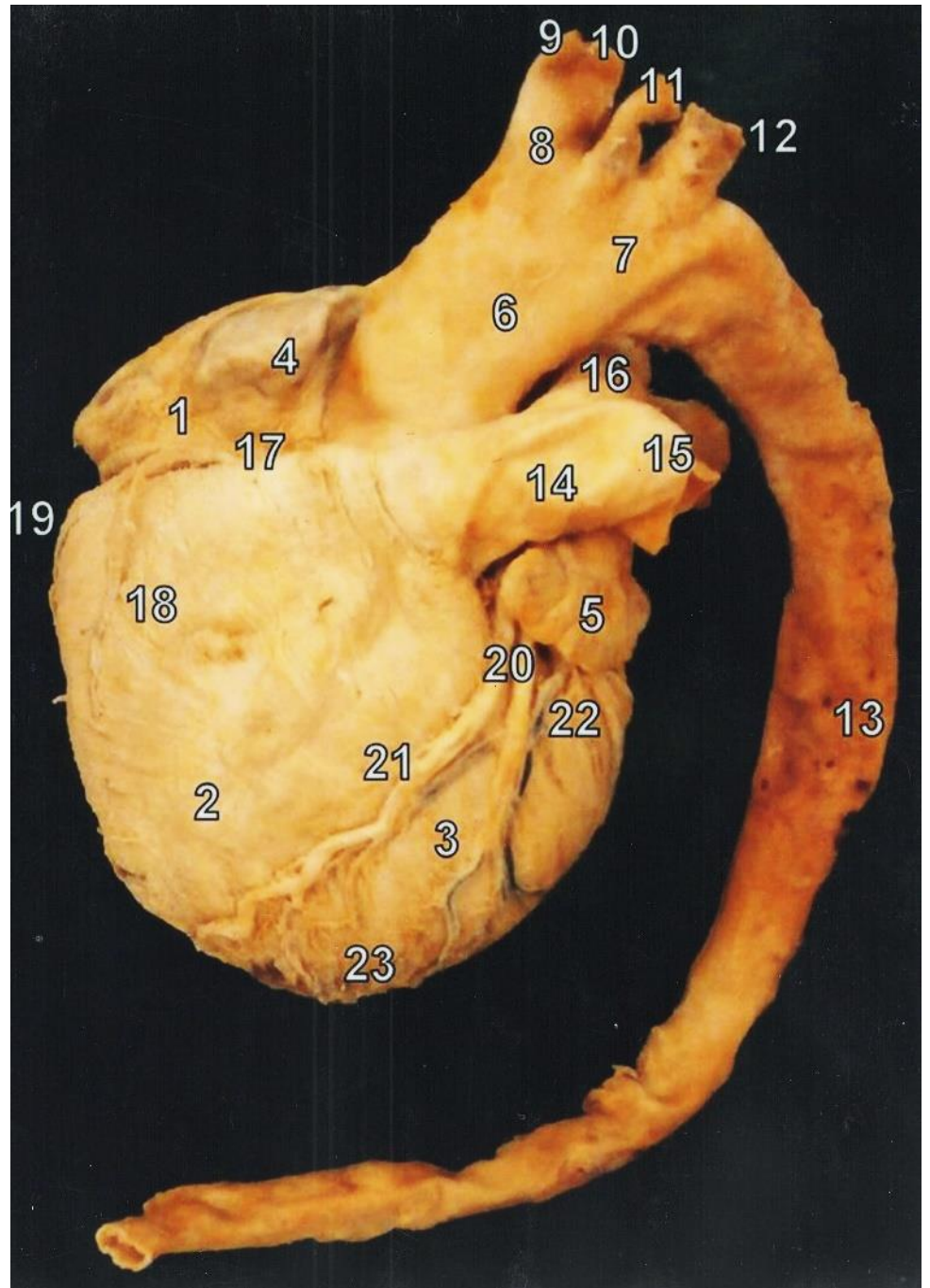
Redagavo: LSMU MF 5k, 20gr, Anatomijos instituto Prozektore Orinta Klimaitė



1. Aorta ascendens
2. Arteria coronaria dextra
3. Sulcus interventricularis anterior
4. Arteria coronaria sinistra
5. Vena cardiaca magna
6. Sinus coronarius
7. Ramus marginalis (arteria coronaria dextra)
8. Vena cardiaca media
9. Vena ventriculi sinistri posterior
10. Vena marginalis sinistra

Darbą atliko: LSMU MF Kotryna Kvitkovskaja 23gr, Kamilė Porutytė 25gr, 2015m.  
 Redagavo: LSMU MF 5k, 20gr, Anatomijos instituto Prozektore Orinta Klimaitė

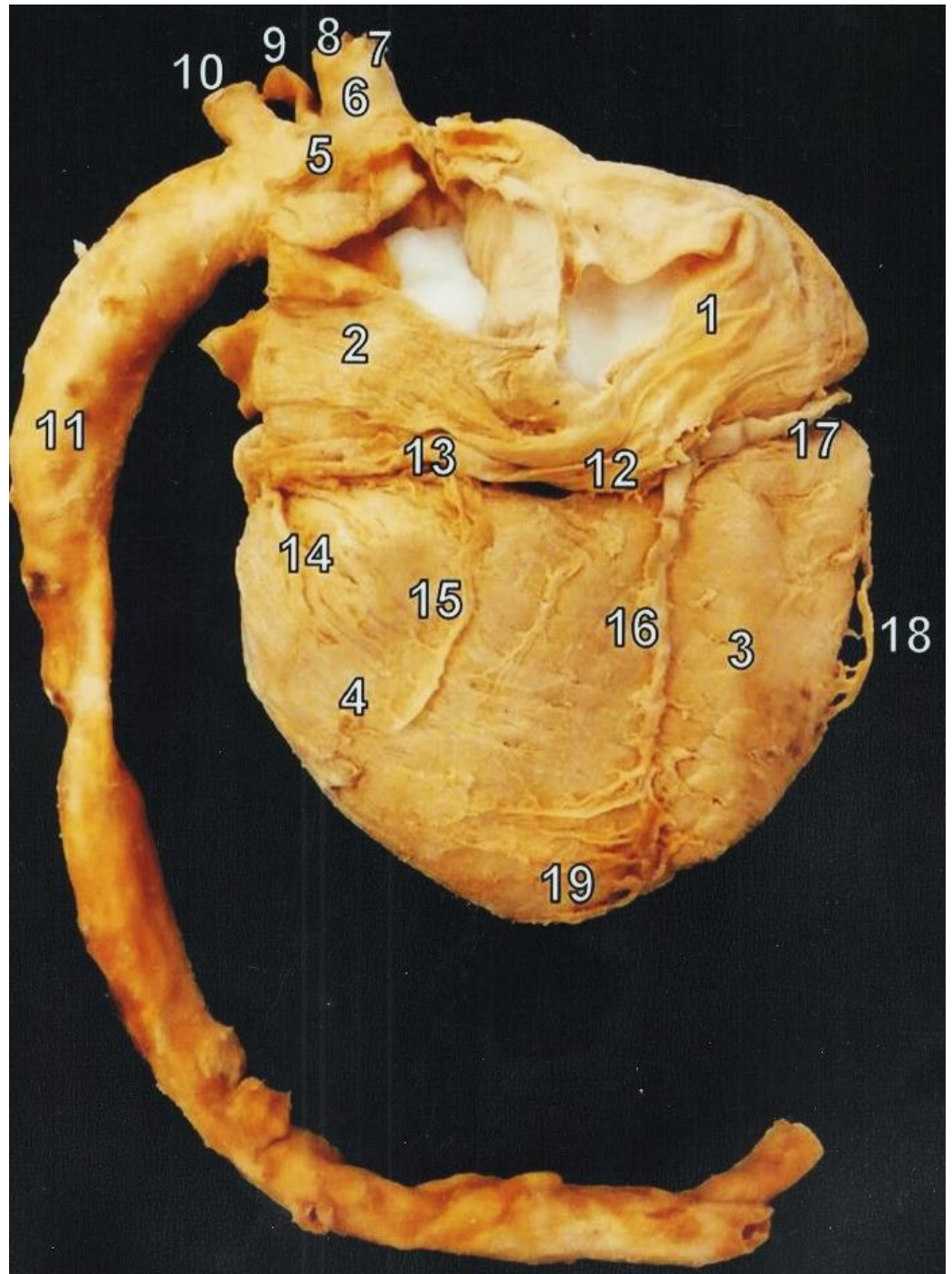
1. atrium dextrum
2. Ventriculus dexter
3. Ventriculus sinister
4. Auricula dextra
5. Auricula sinister
6. Aorta ascendens
7. Arcus aortae
8. Truncus brachiocephalicus
9. A. subclavia dextra
10. A. carotis communis dextra
11. A. carotis communis sinistra
12. A. subclavia sinistra
13. Aorta descendens
14. Truncus pulmonalis
15. A. pulmonalis sinistra
16. A. pulmonalis dextra
17. A. coronaria dextra
18. R. anterior ventriculi dextri
19. R. marginalis dexter
20. A. coronaria sinistra
21. R. interventricularis anterior
22. V. cordis magna
23. Apex cordis



Darbą atliko: LSMU MF 1k, 8gr Jūratę Gasiūnaitė, Greta Graužinytė, 2013m.  
 Redagavo: LSMU MF 5k, 20gr, Anatomijos instituto Prozektore Orinta Klimaitė

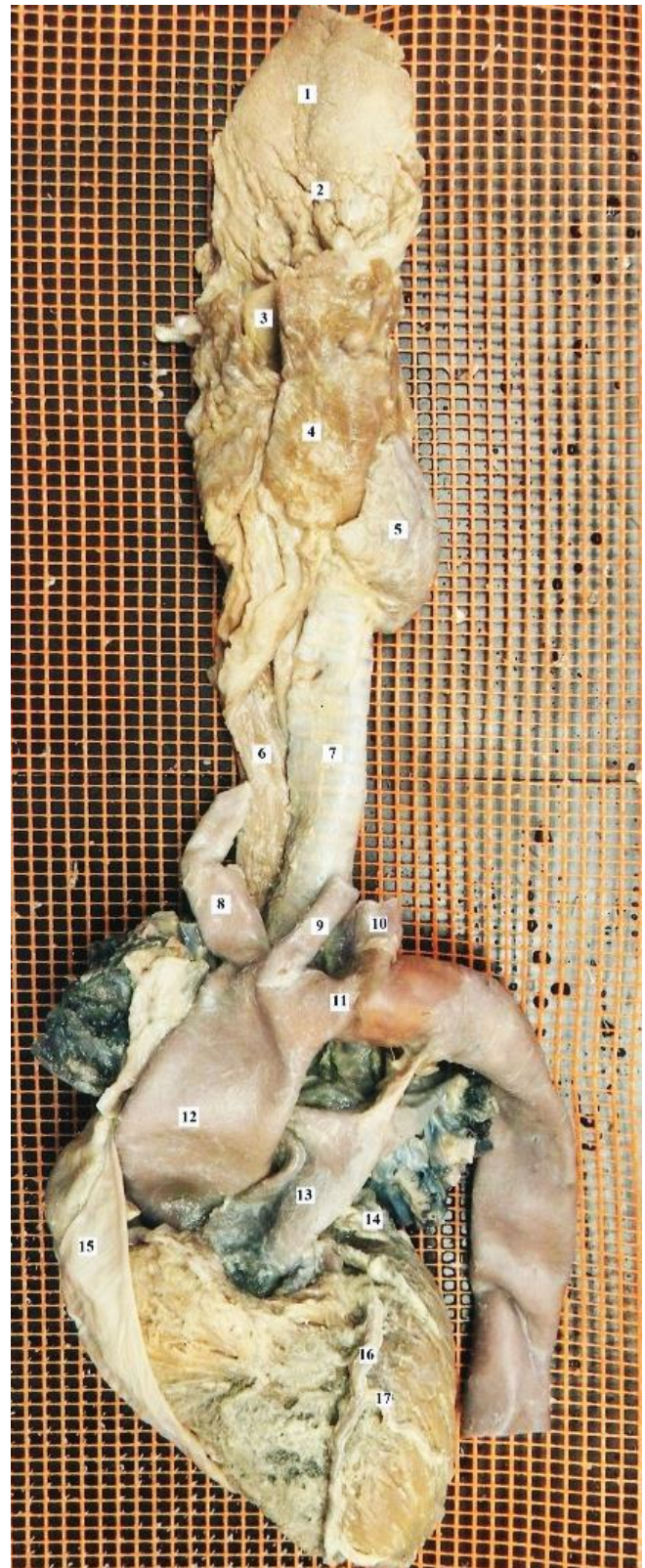


1. atrium dextrum
2. Atrium sinistrum
3. Ventriculus dexter
4. Ventriculus sinister
5. Arcus aortae
6. Truncus brachiocephalicus
7. A. subclavia dextra
8. A. carotis communis dextra
9. A. carotis communis sinistra
10. A. subclavia sinistra
11. Aorta descendens
12. Sins coronarius
13. V. cordis magna
14. A. coronaria sinistra
15. V. ventriculi sinistri posterior
16. R. interventricularis posterior
17. A. coronaria dextra
18. R. marginalis dexter
19. Apex cordis

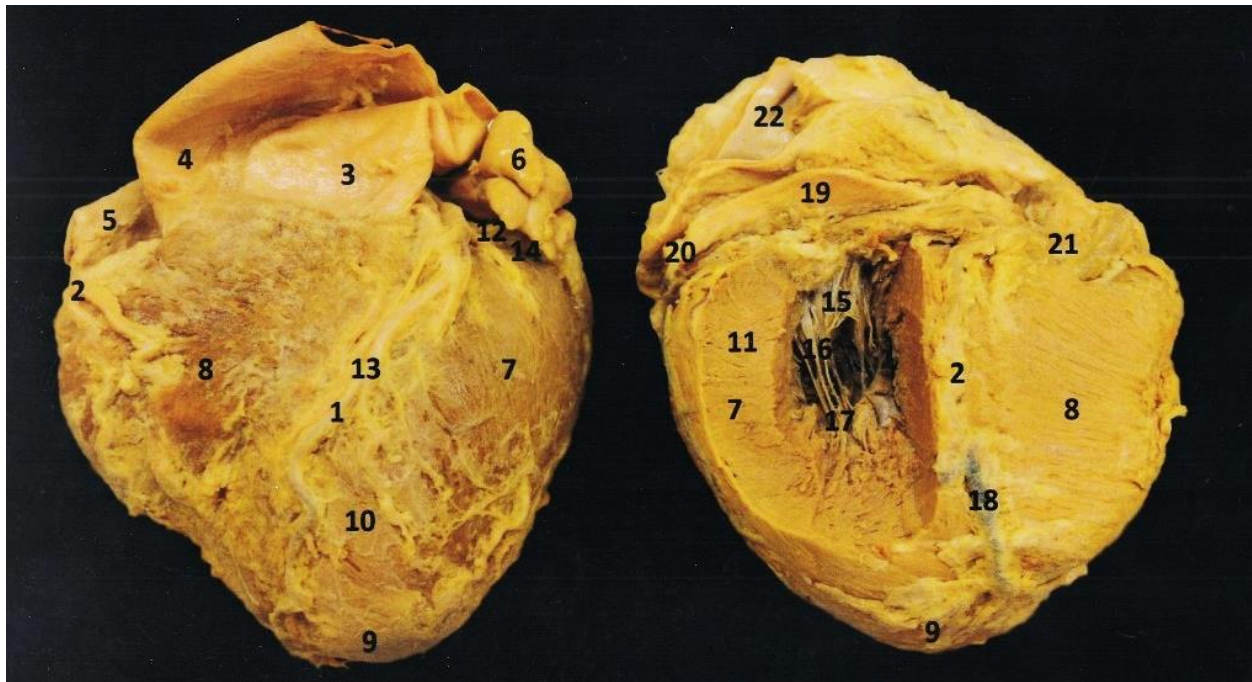


Darbą atliko: LSMU MF 1k, 8gr Jūratę Gasiūnaitė, Greta Graužinytė, 2013m.  
 Redagavo: LSMU MF 5k, 20gr, Anatomijos instituto Prozektore Orinta Klimaitė

1. Lingua
2. Radix linguae
3. Epiglottis
4. Glandula thyroidea
5. ???
6. Oesophagus
7. Trachea
8. Truncus brachiocephalicus
9. Arteria carotis communis sinistra
10. Arteria subclavia sinistra
11. Arcus aortae
12. Aorta
13. Truncus pulmonalis
14. Venae pulmonalis
15. Pericardium
16. Arteria coronaria sinistra
17. Arteria coronaria dextra



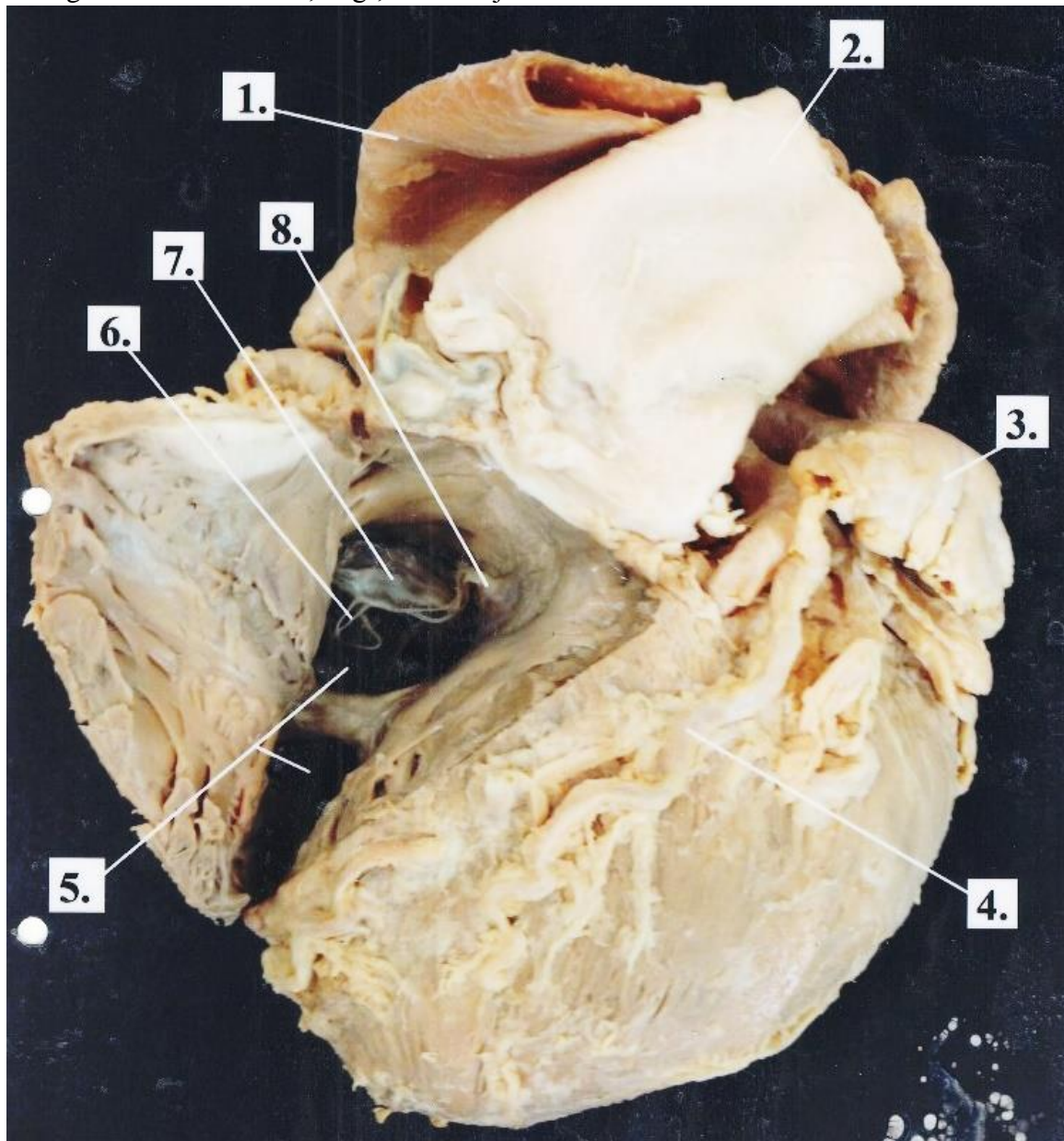
Redagavo: LSMU MF 5k, 20gr, Anatomijos instituto Prozektorė Orinta Klimaitė



1. A. coronaria sinistra, r. interventricularis anterior
2. A. coronaria dextra
3. Truncus pulmonalis
4. Pars ascendens aortae
5. Atrium dextrum, auricula dextra
6. Atrium sinistrum, auricula sinistra
7. Ventriculus sinister
8. Ventriculus dexter
9. Apex cordis
10. Epicardium
11. Myocardium
12. A. coronaria sinistra, r. circumflexus
13. V. interventricularis anterior
14. V. cordis magna
15. Valva atrioventricularis sinistra, cuspis anterior et posterior
16. Chordae endineae
17. M. papillaris
18. V. cordis media
19. Sinus coronarius
20. V. cordis magna
21. V. cordis parva
22. Vv. pulmonales

Darba atliko: LSMU MF 1k Laurita Vaičaitė, Milda Staniulytė, 2015m

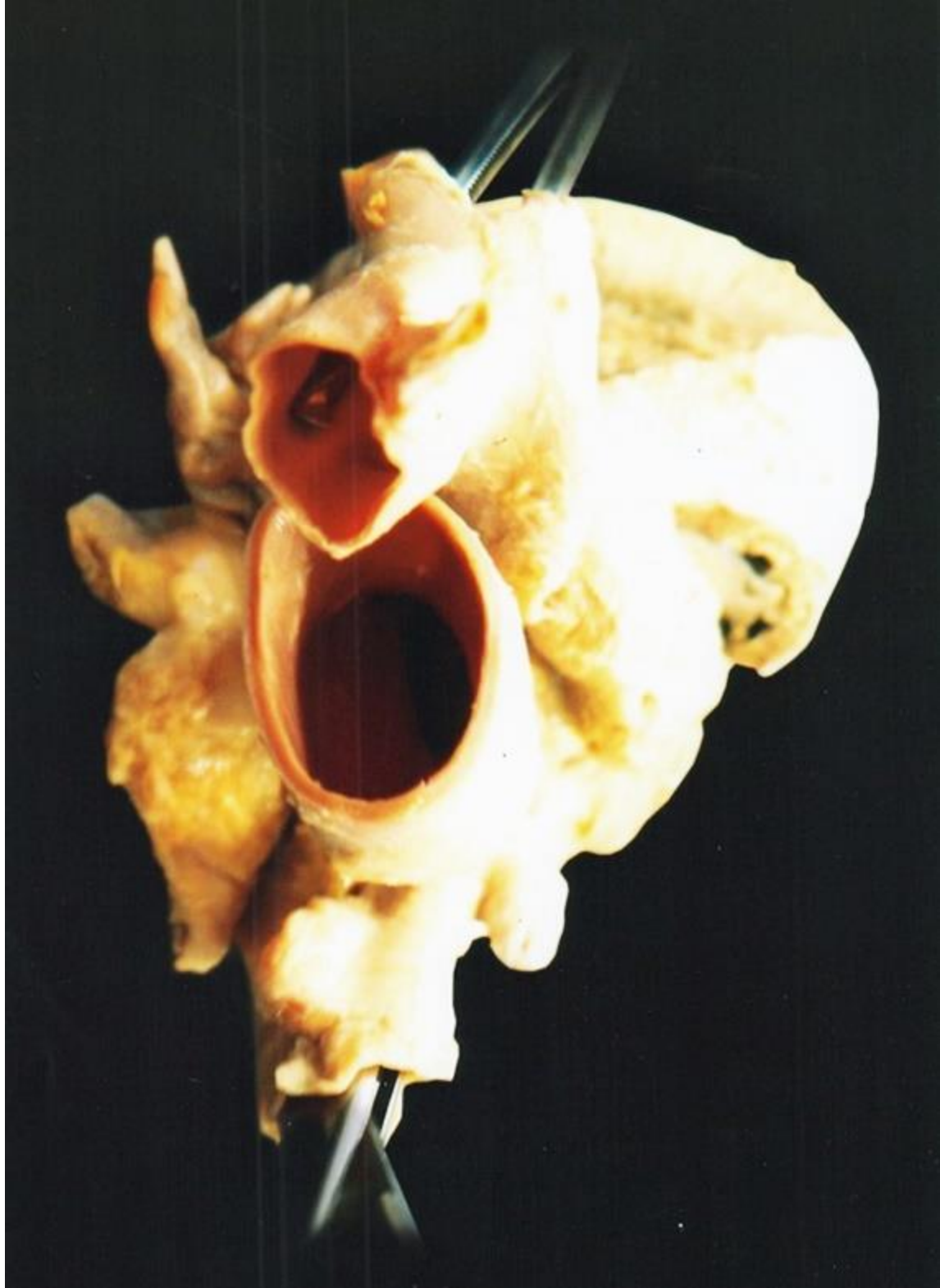
Redagavo: LSMU MF 5k, 20gr, Anatomijos instituto Prozektore Orinta Klimaitė



1. Aorta ascendens
2. Truncus pulmonalis
3. Arteria pulmonalis
4. Arteria coronaria sinistra
5. Ventriculus dexter
6. Chorda tendinea
7. Valva tricuspidalis
8. Musculus papillaris

Darbą atliko: LSMU MF 1k., Kotryna Kvitkovskaja 23gr, Kamilė Porutytė 25gr, 2015m.

Redagavo: LSMU MF 5k, 20gr, Anatomijos instituto Prozektore Orinta Klimaitė

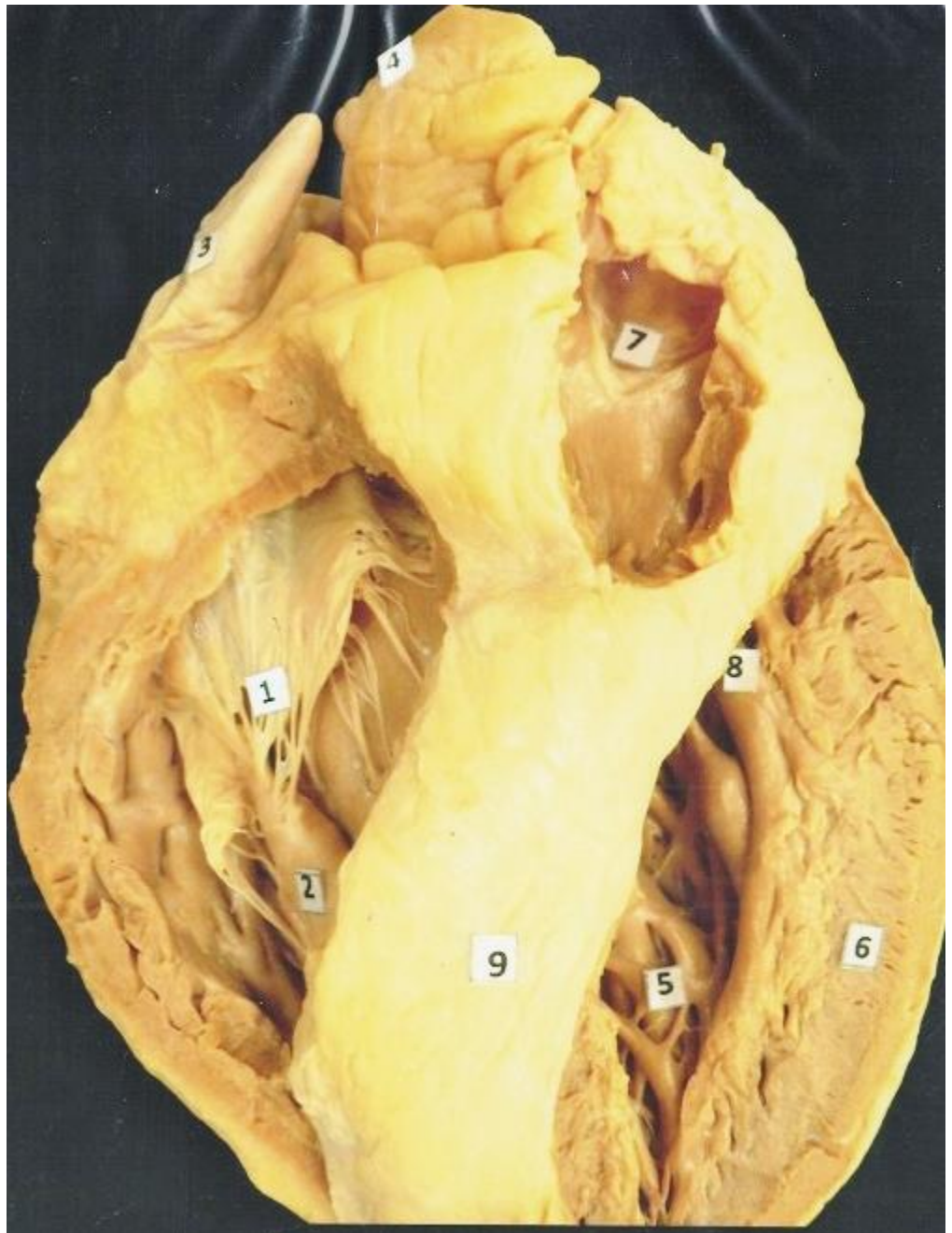


1. Vena cava inferior
2. Aorta abdominalis
3. A. mesenterica inferior
4. A. iliaca communis dextra et sinistra
5. A. iliaca externa
6. A. iliaca interna



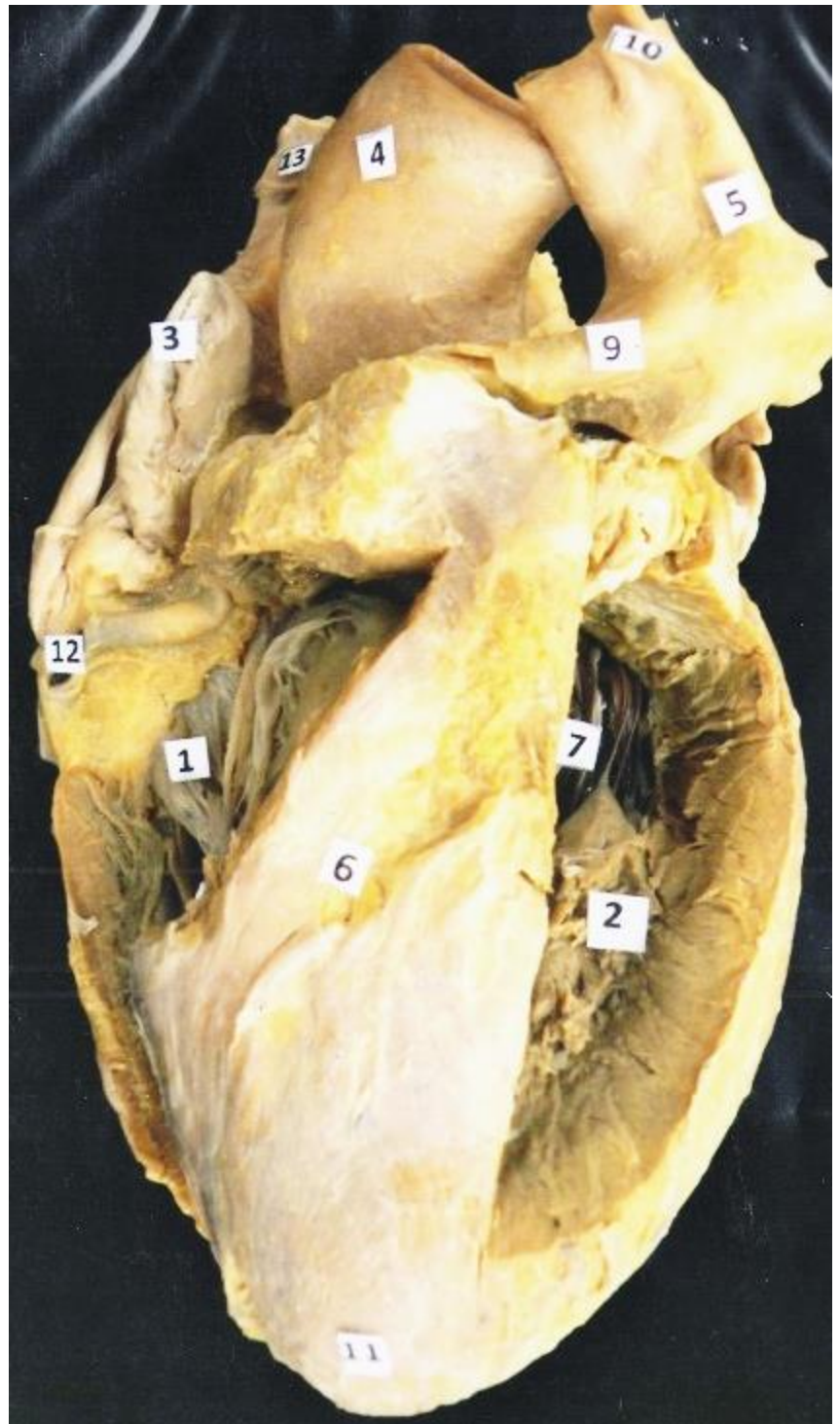
Redagavo: LSMU MF 5k, 20gr, Anatomijos instituto Prozektore Orinta Klimaitė

1. Valva atrioventricularis dextra, s. tricuspidalis
2. Musculi papillaris
3. Auricula dextra
4. Aorta
5. Trabeculae carnea
6. Miocardium
7. Valva semilunaris posterior
8. Ventriculus sinister
9. Epicardium

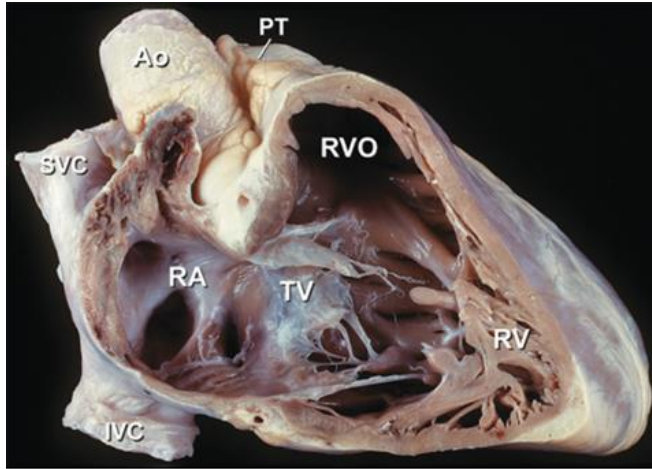


Redagavo: LSMU MF 5k, 20gr, Anatomijos instituto Prozektore Orinta Klimaitė

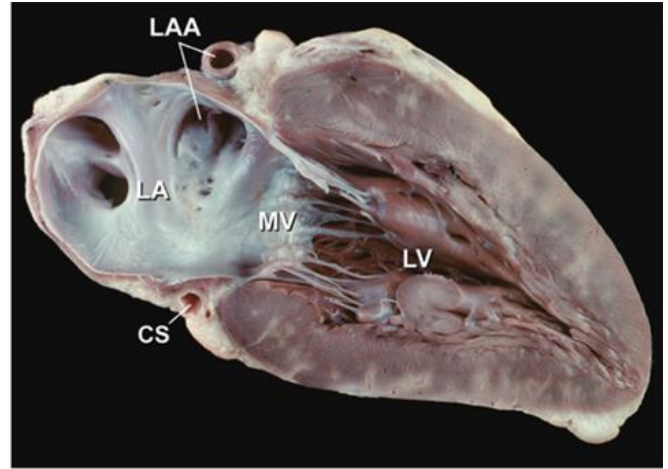
1. Valva atrioventricularis dextra, s. tricuspidalis
2. Endocardium/trabeculae carnae
3. Auricula dextra
4. Aorta
5. Truncus pulmonalis
6. Epicardium
7. Valva atrioventricularis sinistra, s. mitralis, s. bicuspidalis
- 9,10. Arteria pulmonalis sinister et dexter
11. Apex cordis
12. Sinus coronarius



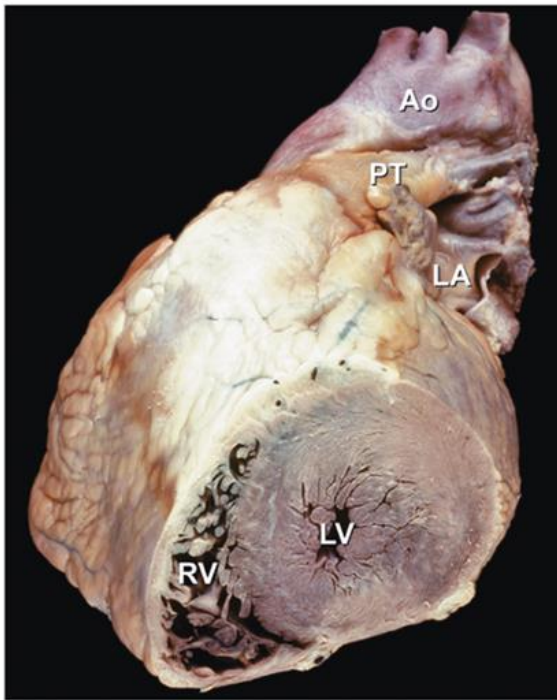




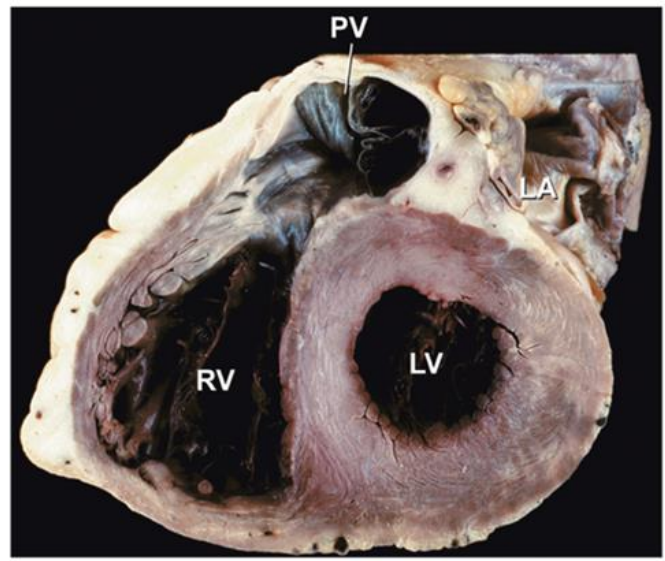
A



B



C



D

Source: Valentin Fuster, Robert A. Harrington, Jagat Narula, Zubin J. Eapen: Hurst's The Heart, Fourteenth Edition: www.accessmedicine.com Copyright © McGraw-Hill Education. All rights reserved.

Ao, ascending aorta;  
 CS, coronary sinus;  
 IVC, inferior vena cava;  
 LA, left atrium;  
 LAA, left atrial appendage;  
 LV, left ventricle;  
 MV, mitral valve;

PT, pulmonary trunk;  
 PV, pulmonary valve;  
 RA, right atrium;  
 RV, right ventricle;  
 RVO, right ventricular outflow;  
 SVC, superior vena cava;  
 TV, tricuspid valve.

1. Rectus
2. Ren
3. Ureter
4. Ductus deferens
5. Aorta
6. Vesicae
7. Colon sigmoideum
8. V. testicularis dexter
9. V. testicularis sinister
10. A. mesenterica inferior
11. A. testicularis
12. N. iliohipogastricus
13. N. ilioinguinalis
14. V. cava inferior

