



LSMU FRESHMEN'S GUIDE'23

CONTENT

1

[Introduction](#)

1.1

[How to get to Kaunas and LSMU?](#)

1.1.1

[Kaunas and Vilnius airport maps](#)

1.1.2

[Shuttle bus between Vilnius and Kaunas](#)

2

[Where to start?](#)

2.1.

[Freshmen´s facebook groups](#)

2.2.

[Freshmen´s camp](#)

3

[University login information](#)

4

[University information system](#)

5

[Study schedule](#)

6

[Accommodation](#)

7

[University departments](#)

8

[Lsmu veterinary academy map](#)

9

[Kaunas clinics map](#)

10

[Public transport between departments](#)

11

[Scholarships](#)

12

[Special needs](#)

13

[Health insurance](#)

14

[Bank account](#)

15

[Quality of studies and assessment](#)

16

[Where to ask if I have questions?](#)

17

[Where to ask if I have questions?](#)

18

[Study abroad opportunities](#)

19

[Monitors concept](#)

20

[Leisure time](#)

21

[More about ICOSA](#)

1

WELCOME,

every fall, the University is reborn as it welcomes a bunch of new students. Eyes full of excitement and enthusiasm, the bustle of various questions and the warmth of yet new acquaintances fill the auditoriums, laboratories, and libraries. We are glad that from now on, we will be able to meet you here at the Lithuanian University of Health Sciences. So as to make this journey a smooth one, we have prepared a guided tour for you, which will help you get to know the University.



HOW TO GET TO KAUNAS AND LSMU?

FROM KAUNAS AIRPORT



KAUNAS CITY BUS

Nr. 29G



KAUNAS CITY CENTER



TAXI OR BOLT



FROM VILNIUS AIRPORT



VILNIUS CITY BUS

Nr. 88
Nr. 1
88N
Nr. 3G



VILNIUS CITY CENTER



TAXI



TRAIN



TRAIN



BUS



KAUNAS CITY CENTER



SHUTTLE BUS



1.1.1

KAUNAS AIRPORT MAP

Passenger terminal map

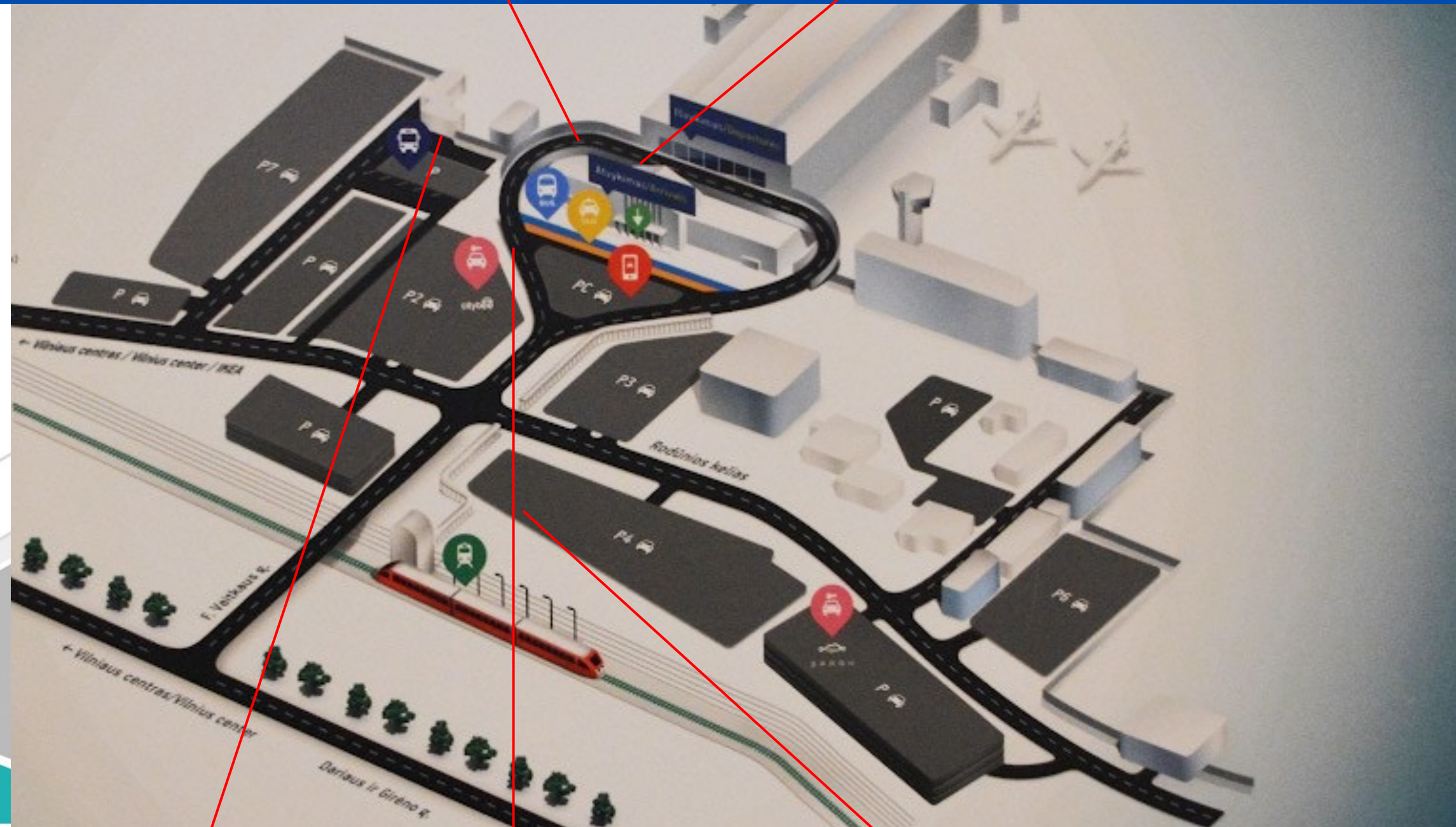
Taxi drop-off and pick-up map



VILNIUS AIRPORT MAP

Vilnius city bus

Taxi



Taxi

Kaunas city bus

Shuttle bus

Bolt

Train

SHUTTLE BUS BETWEEN VILNIUS AND KAUNAS

1.1.2

Ollex express buses:

Route: Kaunas - Vilnius airport – Kaunas (Circle K in Murava)

Travel time ≈ 1 hour 15 minutes

Price ≈ 15 Eur

*Tickets can be purchased online or at ticket offices

Tickets, timetables and more information can be found [HERE](#)



The bus stops in Circle K Murava, in Kaunas

Can take a Bolt

Can take a 29G city bus

Kaunas city center



2 WHERE TO START?



Freshmen Facebook groups:

we live in the era of information technology, so we also communicate on social media. The University community is no exception.

LSP

Lithuanian student card:



[More information](#)

ISIC

International student card



[More information](#)

How to order LSP?

Click "More information", register, enter your personal data, upload a photo, choose an address and wait courier call for LSP delivery time

2.1

FRESHMEN'S GROUPS

Join your study programs Facebook group:

[Medicine](#)

[Odontology & Oral hygiene](#)

[Veterinary medicine](#)

[Pharmacy](#)

[Health Psychology & Clinical Health Psychology](#)

[Public Health](#)

[Nursing](#)

[Physiotherapy](#)

[Food Science](#)

[Laboratory medicine biology](#)

2.2

FRESHMEN'S CAMP (15–17 of September)

Freshmen's camp – is the place where YOUR student life begins. Here you will get to know your fellow students, get reliable information about studies, the University and much more!

Want to know more? Scan this QR code and stay updated on important information about the camp!

Or follow freshers camp Instagram page!

**Registration will
start soon!!!**



SCAN ME



3

UNIVERSITY LOGIN INFORMATION

Your login will automatically be activated within 24 hours after signing the contract

One login name and password is used to connect to all University systems. Login names are generated by this rule:

Name Surname, born in 1989 04 23. Example:

User name (User ID): namesurn0423

Password: namesurn1989

Small Latin letters

Important! When connecting to an Office 365 account (e-mail, Teams), it is necessary to specify the domain name @kmu.lt in the login name. Example: namesurn0423@kmu.lt

The password can only be changed in the study information system and the password is automatically changed for all university systems.

*YOU WILL LEARN
"HOW TO TAME
INFORMATION
SYSTEMS"*

"Office 365" is available to all students and includes Word, Excel, and PowerPoint applications.

[Get "Office 365" for your computer](#)

4

UNIVERSITY INFORMATION SYSTEM

MOODLE is a virtual learning environment. Here you will find study materials provided by teachers. This is also where midterms and final evaluation tests take place.

[Login](#)

EMAIL for questions:

<http://pastas.lsmuni.lt>

Your mailbox address: name.surname@stud.lsmu.lt

Email is one of the features of Office365 account. You can also use the following functions: Teams, OneDrive (for document storage), calendar (you can synchronize with your study schedule).

CONTACTS:

If you have problems logging in to information systems, please contact us
<https://pagalba.lsmuni.lt/en>

LSMUSIS is an LSMU study information system where students submit their applications, personal data, are informed with grades, and other information related to the studies' status.

[Login](#)

By logging in the system, you can:

- See your study schedule:

[Schedules](#)

- See your grades:

[Academic record](#)

- Check in the subjects:

[Acknowledgment card](#)

- See your fees for studies and dormitories:

[Payments](#)

- Submit applications regarding studies:

[Applications](#)

- Change your user password:

[Change Password](#)

- Get Microsoft Office for your personal devices:

[User Information](#)

5

STUDY SCHEDULE

You can see your study schedule by logging in to LSMUSIS.
Application Grid:
LSMUSIS -> Schedules
Select filter parameters -> Study level -> Study program -> Course and Year of Study

Check **your** schedule

View the selected schedule

Synchronize your schedule with your calendar

Choose a format that is convenient for you

The screenshot displays the 'My schedule' interface in LSMUSIS. The top navigation bar includes 'Moodle', 'Support system', and 'Suggest'. The left sidebar contains navigation options: 'MY SCHEDULE', 'SCHEDULE', 'BUSYNESS OF AUDITORIUM', 'ORDERS OF AUDITORIUM', 'REPORTS', 'PERSONAL ROOMS SET', and 'PERSONAL SUBJECTS SET'. The main content area shows a calendar for September 2022, with tabs for 'Day', 'Week', '2 Weeks', 'Month', and 'Agenda'. The calendar grid shows course sessions for various days, including times like '08:00-12:30'.

SCHEDULE

6

ACCOMMODATION

University dormitory

The first-year students may apply for accommodation in the LSMU dormitory:

- Dormitory 1 on Dainavos st. 3.
- All students who have paid their tuition will receive a link to the dormitory registration and later receive an email about the dormitory place.

Apartment rental

Students of the upper years are required to find accommodation in the city by themselves. Admission officers in the International Relations and Study Centre may assist students in the search for accommodation, i.e. renting a private-owned apartment in the city.

Apartments for rent are available in the city.

Solo Society Student House

Address: Kestucio
str. 36, Kaunas
Phone:
+37061599996
Email: info@solosociety.lt

Student Residence Hall

Address: Kurpiu
str. 26, Kaunas
Phone:
+37060058806
Email: info@studentresidencehall.com

Hotel BEST BALTIC Kaunas

Address: A. Mickevičiaus
g. 21, Kaunas
Phone: +370 618 31066
(viber, whats'app
available)
Email: kaunas@bestbaltic-hotels.eu

Real estate agencies

Capital Kaunas
Ober-Haus
Kaunas
Forto siena
Kaunas

Cozy Apartments

Address: A.
Mickevičiaus st.
6, Kaunas,
Lithuania

Homerental

www.aruodas.lt*

Others

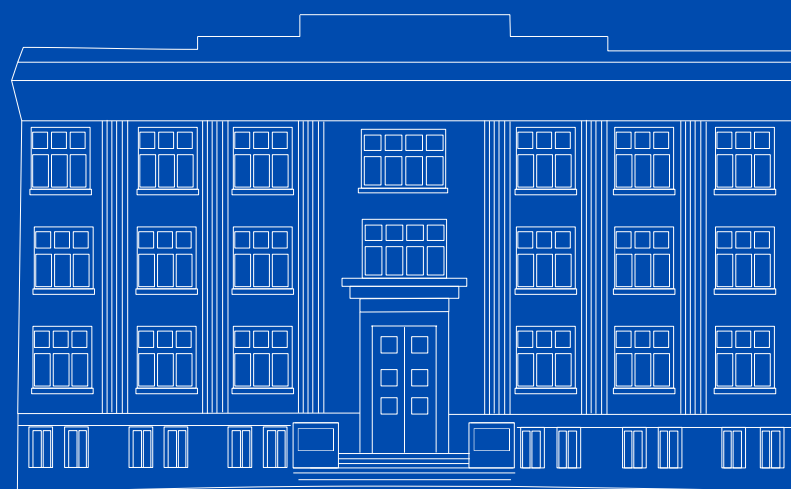
www.skelbiu.lt*

[MORE INFORMATION](#)

*Be aware of scams

7

UNIVERSITY DEPARTMENTS



LSMU Medical Academy. Central Building

Address: A. Mickevičiaus str. 9, Kaunas
Tel.: (8 37) 32 72 01

LSMU Veterinary Academy. Central Building

Address: Tilžės str. 18, Kaunas
Tel.: (8 37) 36 23 83



Faculty of Pharmacy
**Centre for the Advanced Pharmaceutical
and Health Technologies**
(Sukilėlių pr. 13)

Faculty of Medicine
(A. Mickevičiaus str. 9)

Faculty of Odontology
(A. Lukšos-Daumanto str. 2, 2nd floor)

Faculty of Nursing
Training laboratory building (MLK)
(Eivenių str. 4, 4th floor)

Faculty of Public Health
(Tilžės str. 18)

**Department of Languages and
Education**
(Jankaus str. 2, the same
entrance as to the 2nd dorm)

Department of Sports Medicine
(Tilžės str. 18)

**LSMU Library and Information
Center**
(Eivenių str. 6)

Faculty of Animal Science
(Tilžės str. 18)

Faculty of Veterinary Medicine
(Tilžės str. 18)

**Dr. L Kriaučeliūnas Small
Animal Clinic**
(Tilžės str. 18)

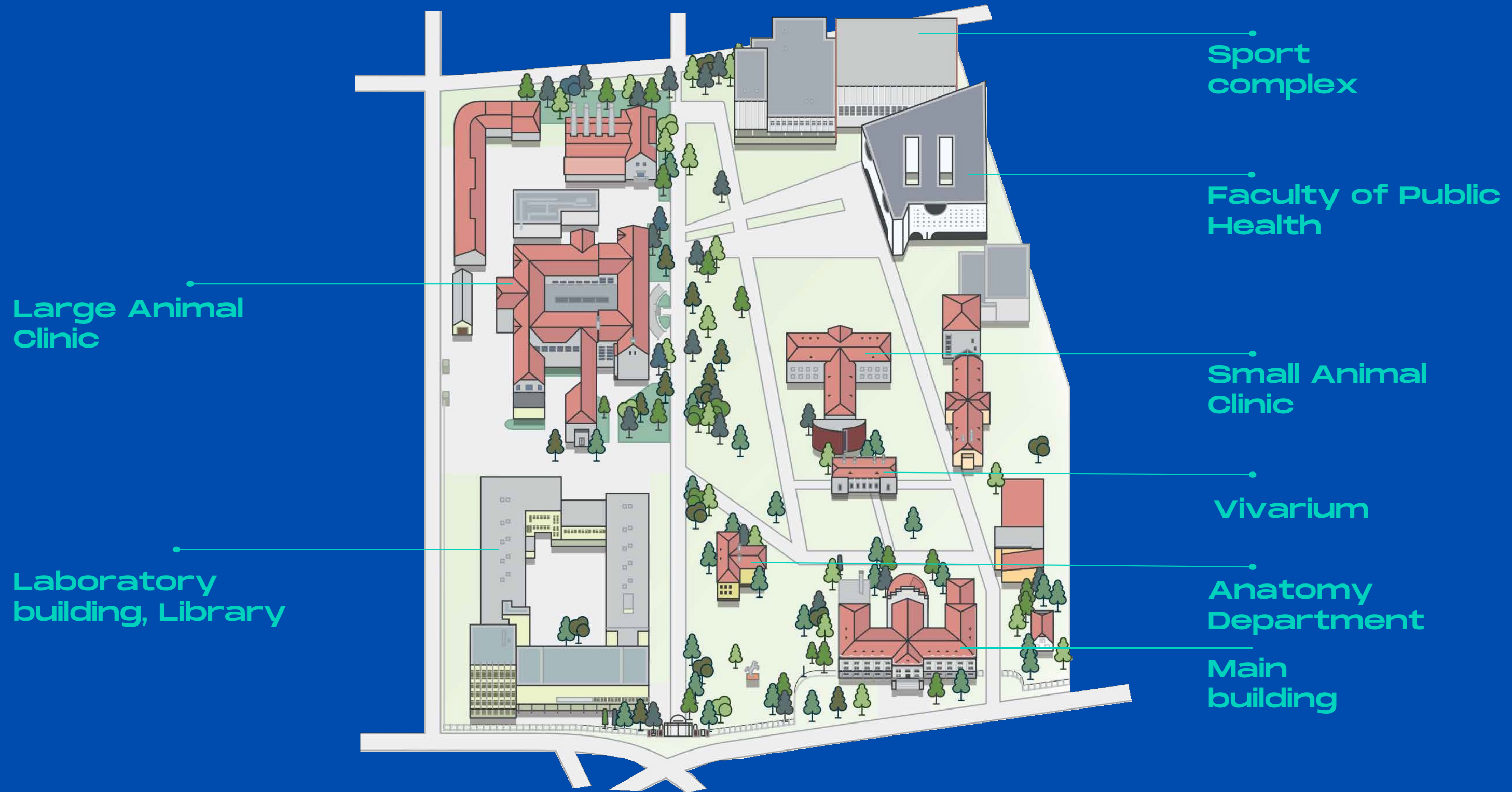
Large Animal Clinic
(Tilžės str. 18)

Anatomicum
(Tilžės str. 18)

**4th building. VA Library and
Auditorium 2 are located in
this building.**
(Tilžės str. 18)

5th building.
**Auditoriums 3 and 4 are
located in this building**
(Tilžės str. 18)

8 LSMU VETERINARY ACADEMY MAP



9

KAUNAS CLINICS MAP

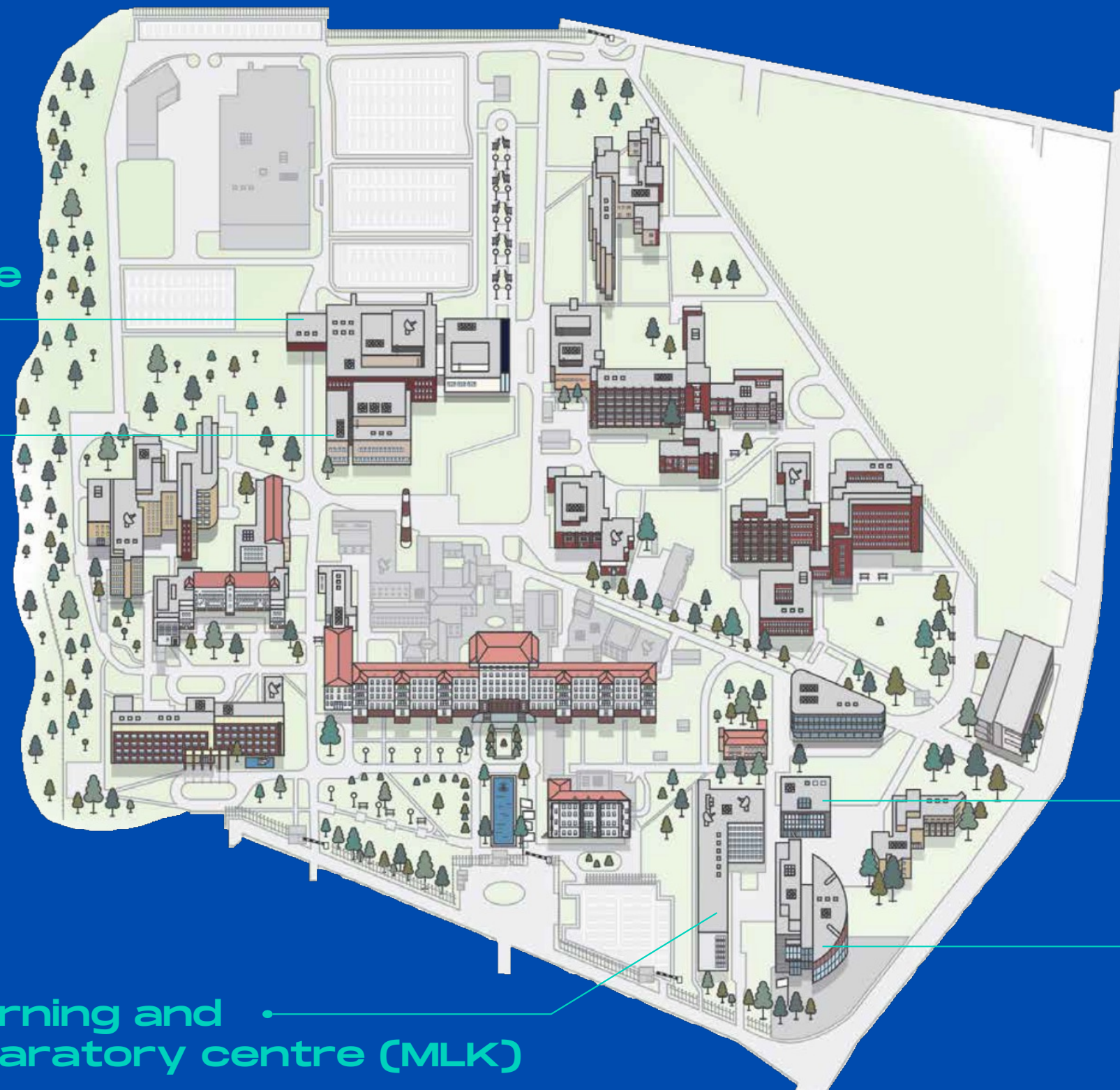
Trauma and Emergency Centre

Outpatient clinic

Learning and Laboratory centre (MLK)

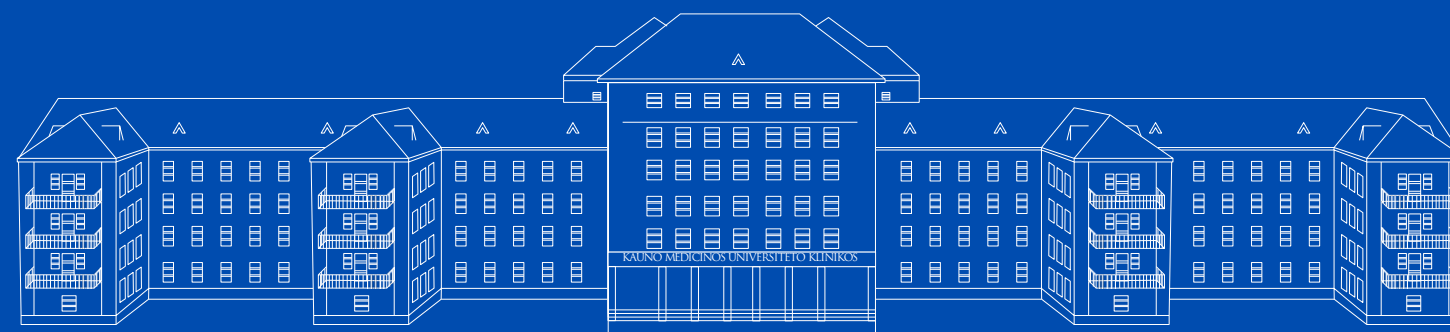
Library

Faculty of Pharmacy



10

PUBLIC TRANSPORT



Bus stop: Griunvaldo g.
Bus: 34G, 43, 67
Trolleybus: 4

Bus stop: Klinikos
Bus: 41 (iki Kėdainių g.)

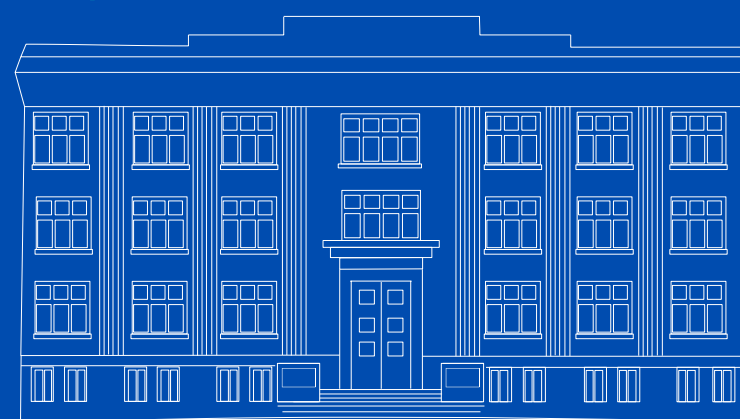
HOSPITAL OF LITHUANIAN
UNIVERSITY OF HEALTH
SCIENCES KAUNO KLINIKOS

Bus stop: Klinikos
Bus: 34G, 43, 67
Trolleybus: 4 (to Griunvaldas str.)

Bus stop: Kėdainių g.
Bus: 41 (to Klinikos)

Bus stop: Kėdainių g.
Trolleybus: 7 (to Griunvaldas str.)

Bus stop: Griunvaldo g.
Trolleybus: 7 (to Kėdainių str.)



LSMU MEDICAL ACADEMY
CENTRAL BUILDING



LSMU VETERINARY ACADEMY
CENTRAL BUILDING

DOWNLOAD THE APP: **Trafi** | >>



11

SCHOLARSHIPS

Incentive scholarship

**1,5 Basic Social Allowance (BSI)
= 73.5€**

Awarded to the best students for the best admission or study results.

Nominal Scholarship

Documents proving active participation in student activities or supportability (those who have lost their parents or guardians, have disabled parents, or come from large families) are required. Awarded twice per academic year, yet one student can receive the scholarship only once.

One-time incentive scholarship

Up to 2 BSI = 98 eur (1BSI = 49 eur)
Awarded for active student, social, organizational, scientific, and sports activities and high results achieved in representing the University. The application is submitted to LSMU Student Representation by the 10th day of the current month.

Internationalization scholarship

Awarded for achievements in increasing University's international awareness.
Can apply from second year in the university.

One-time social scholarship

2 BSI
Given after the birth of a child, the death of a family member, or in the event of a natural disaster (granted once per semester).

12

SPECIAL NEEDS

The University creates an open and friendly study environment for all students, it aims to meet individual students needs by increasing the accessibility of studies and fostering a culture of equality and non-discrimination.

FINANCIAL AID

Students with 45% or a lower level of work capacity, can receive financial support as:

- Financial benefits for special needs
- Reduction of study expenses
- Targeted financial benefits to increase access to studies
- Social scholarship
- Nominal scholarships

Additional financial support for students with special needs participating in Erasmus+ mobility activities.

[More info](#)

ACADEMIC HELP

- Alternative examination methods can be applied for students with special learning disabilities
- Adaptation of the study environment

[More info](#)

PSYCHOLOGICAL HELP

- Individual consultations
- Group consultations
- Participation in training

[More info](#)

Student Representation (SR) – enables students with special needs to get involved in SR activities and represents them

Office of Student Affairs – coordinates the provision of assistance to students with special needs

HEALTH INSURANCE

Health insurance in Lithuania is **compulsory** and can be covered by:

- European health insurance card
- Local insurance companies
- International insurance companies

AON student insurance will keep you insured for the following:

- Medical costs – including urgent dental help
- Repatriation, extra costs, 24/7 emergency assistance helpline
- Liability
- Home contents and baggage
- Accidents
- Legal aid

[More info](#)

In case of emergencies, you can register at:

- Kauno Klinikos
- Kauno miesto poliklinika
- Aušros medicinos centras (private)

Most friendly to assist students and provide necessary treatment could be the clinic „Aušros medicinos centras”

Phone: +370 37 709 904, +370 67 945 144

*Doctors working in the clinic will communicate in English

[More info about insurance](#)

14

BANK ACCOUNT



If you need to open a bank account in Lithuania, you can use one of these banks:

- Swedbank
- SEB
- Luminor
- Šiaulių bankas

To open a bank account, you must bring:

- Valid identity document: passport or identity card
- Certificate of enrollment in the university (you will get it during the registration week)

QUALITY OF STUDIES AND ASSESSMENT OF STUDY ACHIEVEMENTS

Studies at LSMU are performed through contact, mixed and online learning. Completion of the study program and study plan (participation in contact hours classes) is mandatory for students.

ASSESSMENT OF STUDY ACHIEVEMENTS

The exam results or other student achievement evaluations are **submitted to LSMUSIS**.

Appeals may be filed regarding:

- **An assessment or other type of evaluation** within 3 working days after receiving the results
- **A midterm exam** within 3 working days after receiving the results
- **Evaluation procedures** within 3 working days after evaluation
- **A Final exam** within 2 working days after receiving the results

A student who has failed an exam, homework (project), other form of evaluation, has the right to retake it twice free of charge, but no later than by the end of the current study year, i.e., August 31.

QUALITY OF STUDIES

Students are encouraged to be active participants in the study process and contribute to improving the quality of studies by participating in meetings, interviews, and filling out feedback surveys.

“QUALITY THERMOMETER” is an instrument in the University information system LSMUSIS. It will allow you to EVALUATE:

- completed module (subject)
- quality of teaching
- your contribution

[More](#)

WHERE TO ASK IF I HAVE QUESTIONS?

SOCIAL STUDENT SUPPORT:

Laima Piliponienė

Administration of tuition fees
A. Mickevičiaus str. 9, room 113
laima.piliponiene@lsmu.lt

Rūta Antanaitienė

Students' admission, insurance
A. Mickevičiaus str. 9, room 111
Phone: +370-37-327259
ruta.antanaitiene@lsmuni.lt

Milda Mankelevičienė

Migration
A. Mickevičiaus str. 9, room 112
Phone: +370-37-327299
milda.mankeleviciene@lsmuni.lt

Aušra Surantienė

Accommodation
A. Mickevičiaus str. 9, room 111
Phone: +370-659-08381
ausra.surantiene@lsmuni.lt

Žydrė Vengalytė

Exchange students
A. Mickevičiaus str. 9, room 127
Phone: +370-37-395819
zydre.vengalyte@lsmu.lt

Roza Joffè-Luinienė

Psychologist
A. Mickevičiaus str. 9, room 120
roza.joffe@lsmuni.lt

ACADEMIC SUPPORT/FACULTY COORDINATORS:

Milda Stankevičė

Faculty of Medicine
+370 37 387369
milda.stankevice@lsmu.lt

Gerda Grigaitė

Faculty of Veterinary medicine
A. Mickevičiaus str. 9, room 110
gerda.grigaitė@lsmu.lt

Enrika Morkienė

Faculty of Nursing
Eivenių str. 4, room 640
Phone: +370 37 327234
enrika.moriene@lsmu.lt

Gerda Čepienė

Faculty of Public Health
Tilžės str. 18, room 223
Phone: +370 37 32 73 62
gerda.cepiene@lsmuni.lt

Agnė Mazurkevičiūtė

Faculty of Pharmacy
Sukilėlių ave. 13, room 216
Phone: +370 692 29486
agne.mazurkeviciute@lsmuni.lt

Martina Kleinaitė

Faculty of Odontology
J. Lukšos-Daumanto str. 2, room 4
Phone: +370 37 338365
martina.kleinaite@lsmu.lt

Vita Novickienė

Faculty of animal science
Phone: +370 37 361 936
Vita.novickiene@lsmu.lt

WHERE TO ASK IF I HAVE QUESTIONS?

Student affairs office

This is a team that cares about the well-being and career success of LSMU students.

You can apply for: student welfare, psychological, social and financial assistance, individual needs, career, employment, student admission, additional practice.

[SAO](#)

Study center

Coordinates first-, second-cycle and integrated studies, ensuring that students are informed at the right time about study issues.

You can ask about: studies and timetables, certificates of studies, change of group, study plans, student cards.

[SC](#)

LSMU SA

An independent, non-profit, non-political organization representing the interests of university students.

You can ask about: academic, social, study quality, academic integrity issues, scholarships, or student cards issuance.

International Committee of LSMU SA
-> ICOSA

[LSMU SA](#)

International Relations and Study Centre

Organizes foreign students' studies and student and staff exchange programs.

You can ask about: ERASMUS+ studies and internships.

[IRSC](#)

[ERASMUS+](#)

Dean's office of the faculty

Coordinates study subjects, organizes cooperation between teachers and students.

You can ask about: administration of the faculty study process, academic leave.

[FACULTY](#)

18

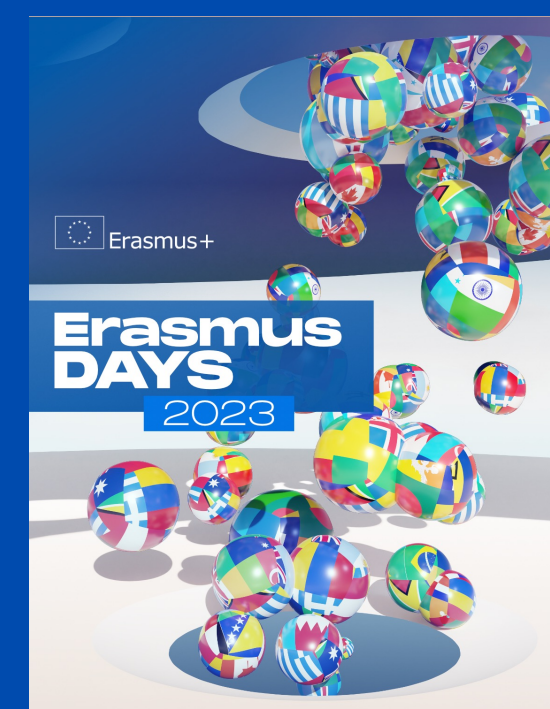
STUDY ABROAD OPPORTUNITIES

Have you ever dreamed of studying the way that French, Portuguese or Turkish students study? Or maybe you want to be in an operating room in an Italian hospital? Do you dream of doing an internship in a stud farm in Germany? Or would you like to get to know the culture and traditions of another country? Maybe you are attracted by travel opportunities? If you answered "Yes" at least once, don't hesitate to come! And we will help you to decide!

Starting from the second year of your studies, you can go on ERASMUS+ mobility!

[More info](#)

At our University, you can visit the International Relations and Study Center, located at the Medical Academy, A. Mickevičiaus str. 9, and get all the information you want about the Erasmus+ student exchange program.

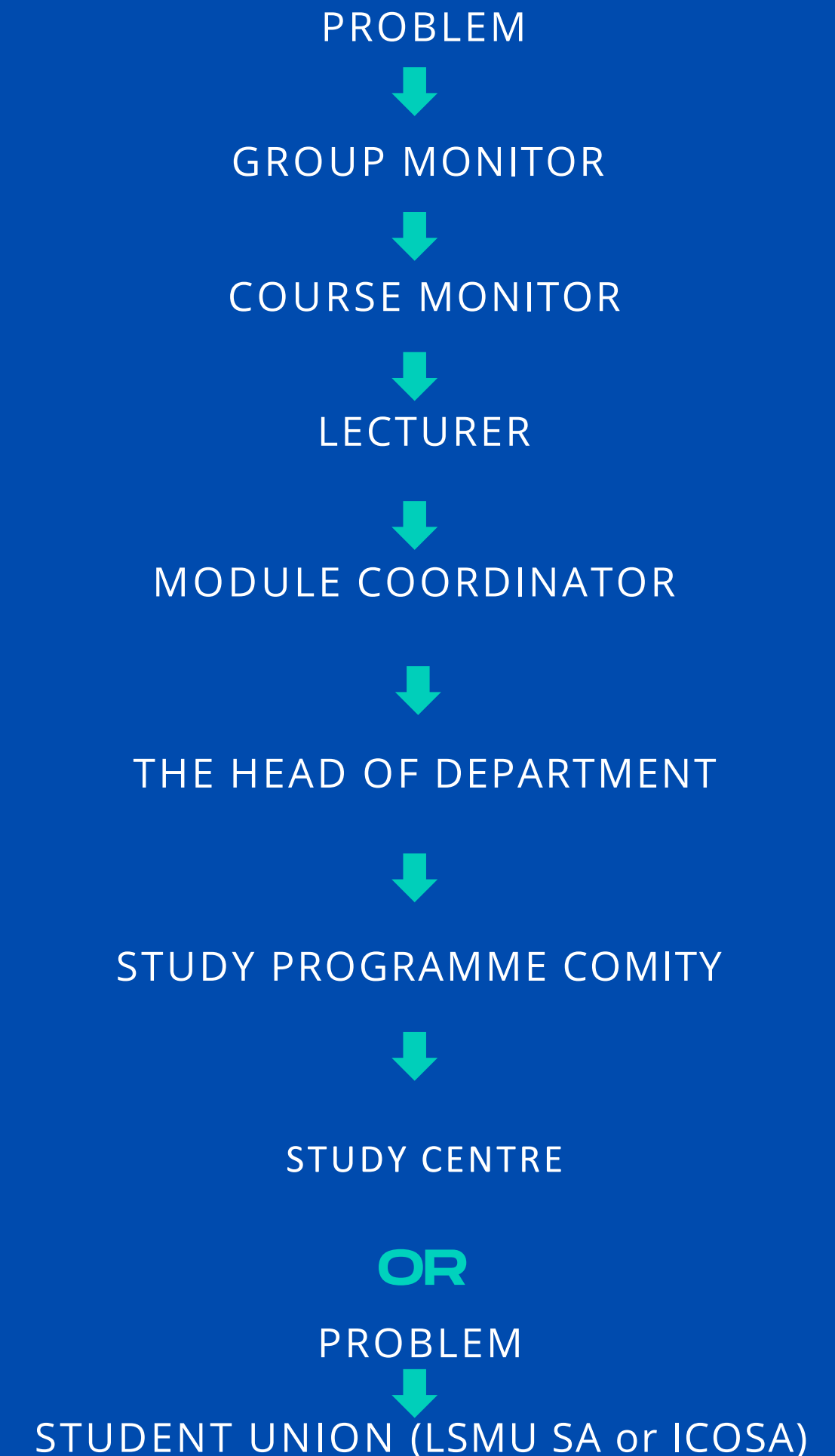


MONITORS CONCEPT

By the middle of September, each group must choose its group monitor. Later, group monitors choose a monitor who represents the entire course.

- A monitor is the main representative of his group or course.
- The term for a monitor – is one academic year (however, usually the same person remains a monitor throughout all study years).
- The group monitor cooperates with the course monitor, teachers, LSMU SA (or ICOSA), University administration, and other University institutions.
- Group monitor must provide their contact information to LSMU SA (or ICOSA).
- The group monitor must convey to the group all relevant information related to the study quality and process, as well as know the most important documents – the Study Regulations and the University Statute.
- The group monitor mediates the coordination of schedules when necessary.
- We recommend that every new monitor takes part in the "Monitors training" organized by LSMU SA International Committee – these monitors get familiar with the University structure and documents.

WHERE TO APPLY?



20 LEISURE TIME

STUDENT REPRESENTATION, ASSOCIATIONS, SOCIETIES:

- ICOSA (International Committee of SA)
- JGA Association of Young Doctors
- LSMU Student Representation
- LiPSA - Lithuanian Psychology Students Association
- LSMU SMD - Student Scientific Society
- LSMU VASA - Veterinary Academy Student Association
- LIVSU - Lithuanian International Veterinary Student Unity
- SFD - Society of Student Pharmacists
- VSSD - Society of Public Health Students
- LiMSA - Lithuanian Medical Students Association
- SOA - Student Dental Association
- LSMU students and doctors corporation
- "Fraternitas Lituanica"
- Corp! "Gaia"
- ESN LSMU - Erasmus Students Network LSMU

SPORT

Sports teams: athletics, basketball, swimming, tennis, ping pong, aerobic gymnastics, chess, badminton, volleyball

ADDITIONAL INTERNSHIP

[More info](#)

IN KAUNAS:

If you wish to experience the real life in Kaunas:

Kaunas Activity Map

[More info](#)

Kaunastic

[More info](#)

ARTISTIC ACTIVITIES:

- LSMU folk dance group Ave Vita



[More info](#)

- LSMU folk dance group Džigūnas



[More info](#)

- LSMU academic choir Neris



[More info](#)

21

MORE ABOUT ICOSA

The International Committee Of LSMU SA, is a non-profitable student organization. At ICOSA, we are committed to making sure that every student's voice is heard, regardless of the language they speak.

Our student organization has seven different committees that focus on seven different goals:

Academics, Charity, Entertainment, Science, Sports, Merchandise, and Public Relations. We work together to create events such as conferences, parties, workshops, charity, sports tournaments, and events to raise money for orphanages in Lithuania.

CONTACTS:

For more information you can contact ICOSA@lsmusa.lt or through Facebook <https://www.facebook.com/icosalsmu>



